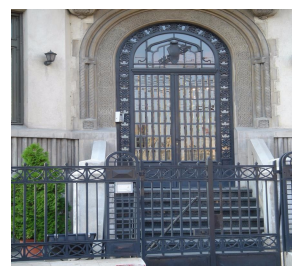
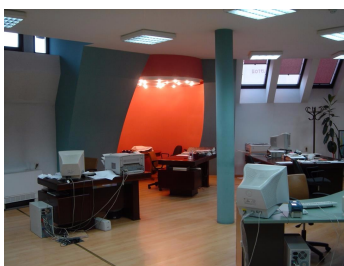
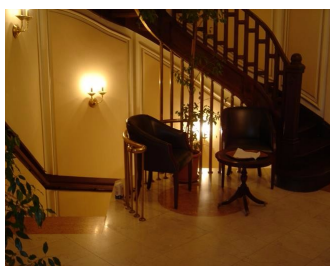


Romana Square

CARACTERISTICS

- ▶ **AREA:** Romana Square
- ▶ **Usable surface:** 550 sqm
- ▶ **Maximum height:** D+P+E+M



Layout

Total usable area: 550 sqm

Semi-basement: 156 sqm

Ground floor: 126 sqm

1st Floor: 129 sqm

Attic: 139 sqm

DESCRIPTION

Great villa offered for rent situated in Romana Square area, close to Lascar Catargiu or Victoriei Square.

Facilities:

the villa was consolidated and fully restored in 2000;

the finishing and amenities are of a great quality.

Additional details:

The building benefits of easy access to all means of transportation, of a great traffic, and access to all the important point of interest in the city.

12,000 EUR

0.20 BITCOIN