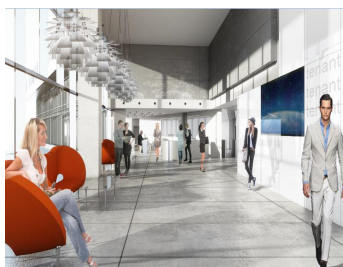


## Grozavesti

### CARACTERISTICS

- ▶ **AREA:** Grozavesti
- ▶ **Usable surface:** 20000 sqm
- ▶ **Maximum height:** 2S+P+10E



### DESCRIPTION

The 4 office buildings are situated at the crossroad between 2 main roads in Bucharest, Vasile Milea and Iuliu Maniu boulevards benefiting from easy access to Basarab Bridge. The location allows easy access to Politehnica subway station.

Facilities:

- green building
- HVAC
- PC and phone network
- Glass curtain wall with anti-solar protection
- BMS
- raised floor
- CCTV
- 5 elevators;
- false ceiling
- Fire detention system
- 1,100 parking places Euro + VAT/place

Available:

1st phase: Q3 2018

2nd Phase: Q4 2019

3rd Phase: Q3 2021

4th Phase: Q4 2022

Usable area/ floor: 2,200 sqm

14.50 EUR sqm + VAT