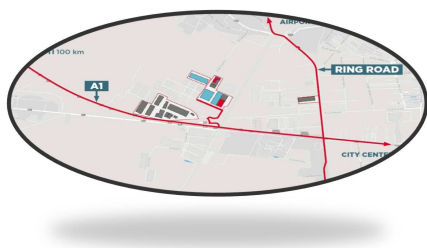


## Militari

## Industrial Spaces for Rent

### CARACTERISTICS

- ▶ **AREA:** Militari
- ▶ **Construction year:** 2019



### Layout

Surfaces available:

#### Available area for storage/ manufacturing:

Warehouse U1: 1,702 sqm;  
Warehouse U7: 1,828 sqm;

Warehouse U2: 2,550 sqm;  
Warehouse U8: 2,444 sqm;

Warehouse U3: 2,290 sqm;  
Warehouse U9: 2,318 sqm;

Warehouse U4: 3,384 sqm;  
Warehouse U10: 3,394 sqm;

Warehouse U5: 1,761 sqm;  
Warehouse U11: 1,702 sqm;

Warehouse U6: 2,460 sqm;  
Warehouse U12: 2,549 sqm;

#### Offices + annex:

Office U1: 331.5 sqm;      Office U7:  
315.5 sqm;

Office U2: 331.5 sqm; Office U8: 315.5 sqm;

Office U3: 807 sqm; Office U9: 614.5 sqm;

Office U4: 807 sqm; Office U10: 614.5 sqm;

Office U5: 315.5 sqm; Office U11: 331.5 sqm;

Office U6: 315.5 sqm; Office U12: 331.5 sqm;

**Rental price:**

Deposit: 4 € / sqm / month + VAT;

Offices: 7 € / sqm / month + VAT;

**Maintenance Fee:**

Deposit: 0,65 € / sqm / month + VAT;

Offices: 0.65 € / sqm / month + VAT

---

**DESCRIPTION**

The logistic park is situated in western side of the city a highly developed logistic area situated at the entrance of the Bucuresti - Pitesti Highway.

Description - Characteristics:

- usable height 12 m;
- sprinkler system, fire protection / gas / smoke detectors;
- ventilation system (heating / cooling);
- Sectional door access doors (4x4,5m);
- all utilities (natural gas, electricity 380, installed power 250KVA, water);
- resistance floor at 5T / mp;
- Internet / fixed telephony network
- administration (guard 24 / 24h, video surveillance, cleaning, etc.);
- truck access;