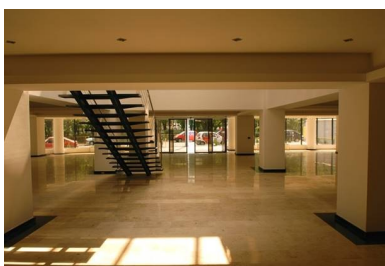
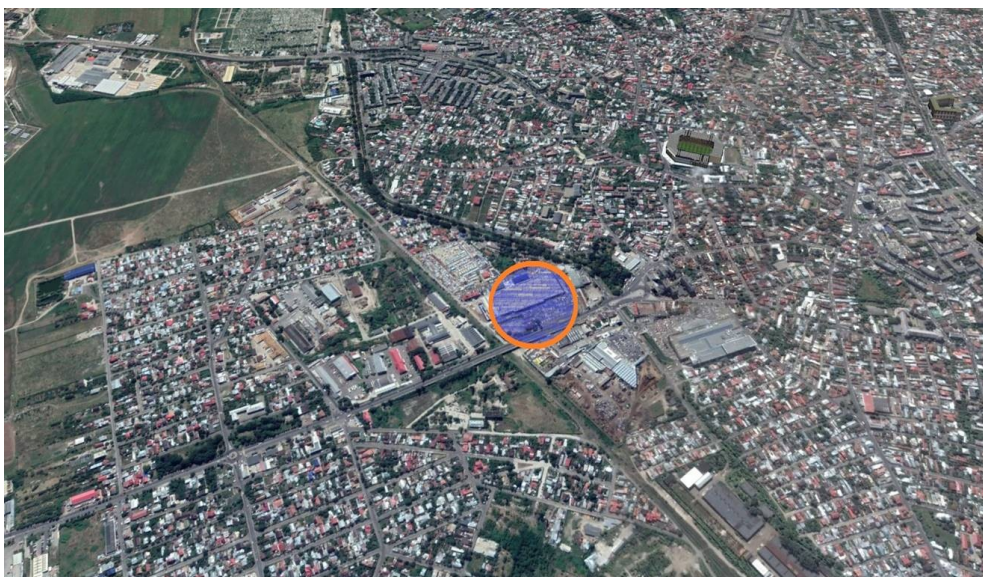


## Ploiesti

## Commercial Spaces

### CARACTERISTICS

- ▶ **AREA:** Ploiesti
- ▶ **Usable surface:** 3306 sqm
- ▶ **Land Surface:** 2600 sqm
- ▶ **Construction year:** 2008
- ▶ **Maximum height:** S+P+2



### DESCRIPTION

Office/ Commercial building for sale, was built in 2008 and is situated in Ploiesti in eastern side of the city. In the immediate vicinity there are: Mall Afi Palace Ploiesti, Dedeman, Artsani.

The building is suitable for hypermarket, hospital/medical center, offices, showroom, casino, restaurant, commercial center etc.

Easy access due to the location next to the means of transportation (a station is at only 100 m distance from the building, for 4 buses).

Built in 2008

Total land plot: 2,600 sqm;

Total built area ( B+GF+2): 3,306 sqm;

For the moment the building is rented as it follows:

Offices: 930 sqm

- Basement – 180 sqm

- Ground floor – 240 sqm

- 1 st Floor– 255 sqm

- 2nd Floor – 255 sqm

Showroom: 1.566 sqm

- Ground Floor – 485 sqm

- 1st Floor - 547 sqm

- 2nd Floor – 534 sqm

Commercial space: 865 sqm

Facilities:

B+GF+2F

- concrete platform for about 15 cars;

- spacial finishing: granite floor and marble, steel handrail, wooden carpentry;

- curtain walls and central skylight, which offers a lot of natural light;

- outside terraces;

- offices furnished and equipped;

- in the showroom each floor is “open-space”;

- the commercial space is open space but can be divided;
- toilets;
- electric doors at the main access, motion sensor;
- all utilities: electricity, water, gas, phone, fiber optical internet;
- air conditioning system
- Video monitoring system;
- Hydrants outside and inside;
- external sewage system for wastewater
- fire prevention system;
- burglar alarm system
- own transformer post of large capacity Energobit