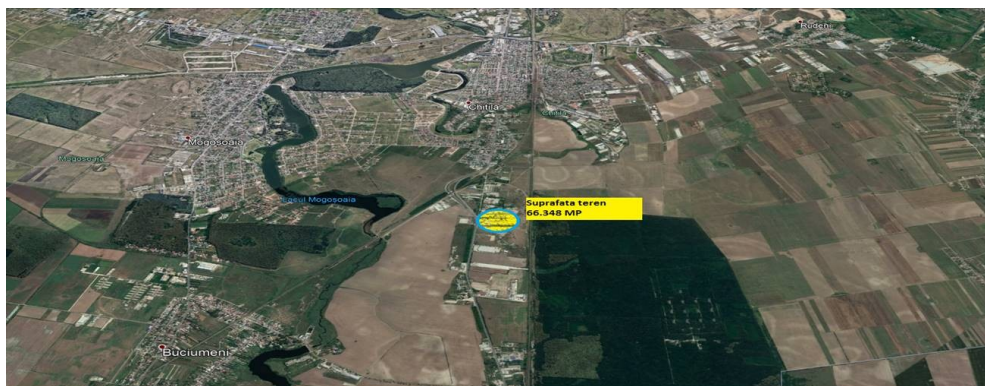


Buftea

Land for Sale

### CARACTERISTICS

- ▶ **AREA:** Buftea
- ▶ **Land Surface:** 56429 sqm
- ▶ **End-use:** Industrial
- ▶ **Land construction:** Yes



### DESCRIPTION

The land plot offered for sale is situated in Northern area, having direct access to DN1 Bucuresti - Ploiesti, to DN7 Bucuresti - Targoviste and to the Ring Road. The plot of land belongs to Buftea city, Ilfov county.

Due to its location and to the generous frontage the land plot is suitable for industrial buildings, to a showroom or / and office building.

Description:

Total land plot: 56,429 sqm

Frontage: 137 m

The property offered for sale is owned by a company.

Existing utilities:

electricity;

gas;

water;

Demolishable building: 6,273 sqm

3,200,000 EUR + VAT

31.65 BITCOIN + VAT

995.79 ETHEREUM + VAT