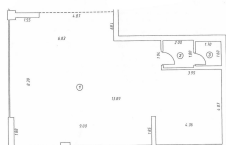


Carol Park

Commercial Spaces

CARACTERISTICS

- ▶ **AREA:** Carol Park
- ▶ **Usable surface:** 105.61 sqm
- ▶ **Land Surface:** 48.56 sqm
- ▶ **Construction year:** 2008
- ▶ **Showcase:** 8.59



Particulars	Dimensions	Area (sqm)
1. Shop area	8.59 x 4.86	41.65
2. Office area	1.20 x 1.20	1.44
3. Corridor area	1.20 x 1.20	1.44
4. Total area		44.53

DESCRIPTION

Commercial space for sale situated close to Carol Park on Marasesti Boulevard at the ground floor of a residential building built in 2008.

Facilities:

8.59 m shopping window;

amenities;

Available immediately;

350,000 EUR

6.09 BITCOIN

127.06 ETHEREUM