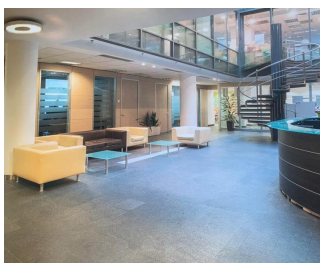
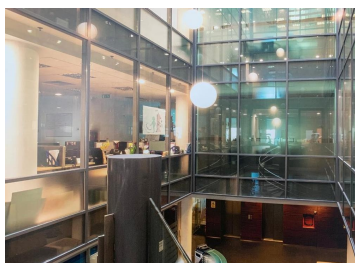
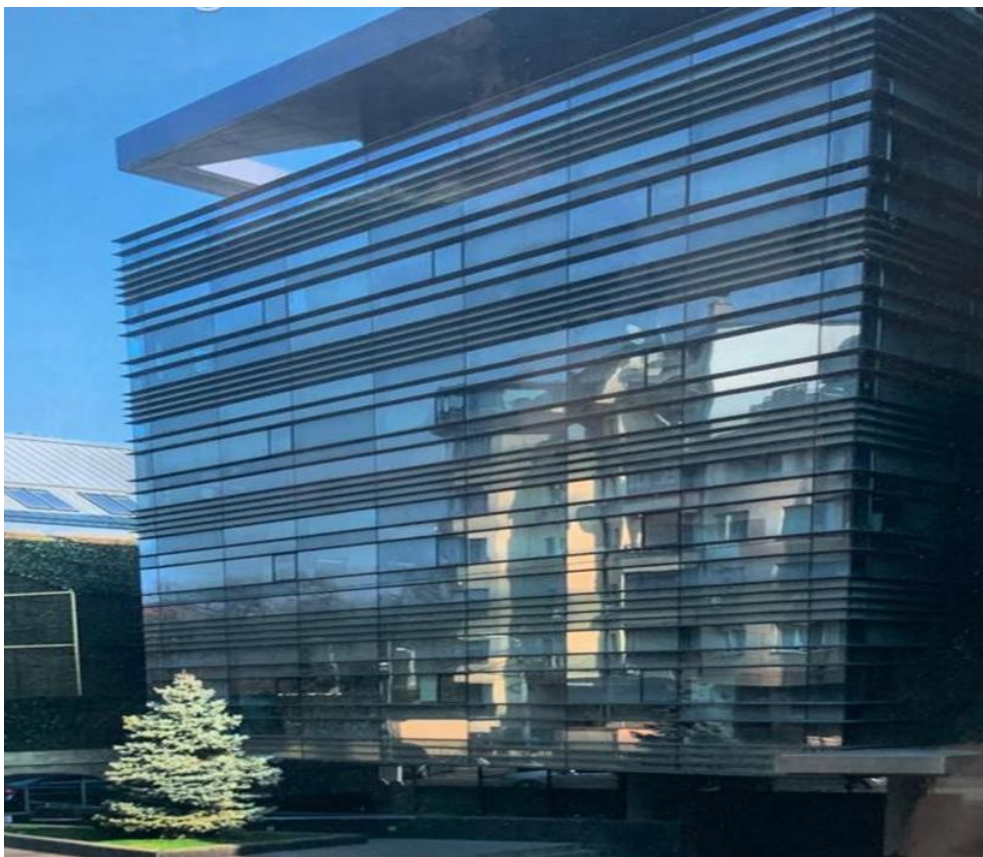


Kiseleff Blvd

CARACTERISTICS

- ▶ **AREA:** Kiseleff Blvd
- ▶ **Usable surface:** 6060 sqm
- ▶ **Land Surface:** 1171 sqm
- ▶ **Parking places:** 38
- ▶ **Construction year:** 2019
- ▶ **Maximum height:** 2S+P+M+4E



Layout

Total usable area: 6,060.7 sqm

Land plot: 1,171 sqm

Ground floor: 341 sqm + 173 sqm terrace

Mezannine: 372.9 sqm

1st Floor: 623 sqm

4th Floor: 403 sqm + 219 sqm terrace

Maintenance: 4 Euro/sqm/month + VAT

DESCRIPTION

The office building offered for rent is situated very close to Kiseleff road at only a few minutes distance from Arcul de Triumf.

Facilities:

- own central heating
- air conditioning;
- carpet;
- sanitary groups;
- security system;
- 38 parking places in the underground;
- ISU authorization;

14.50 EUR sqm + VAT