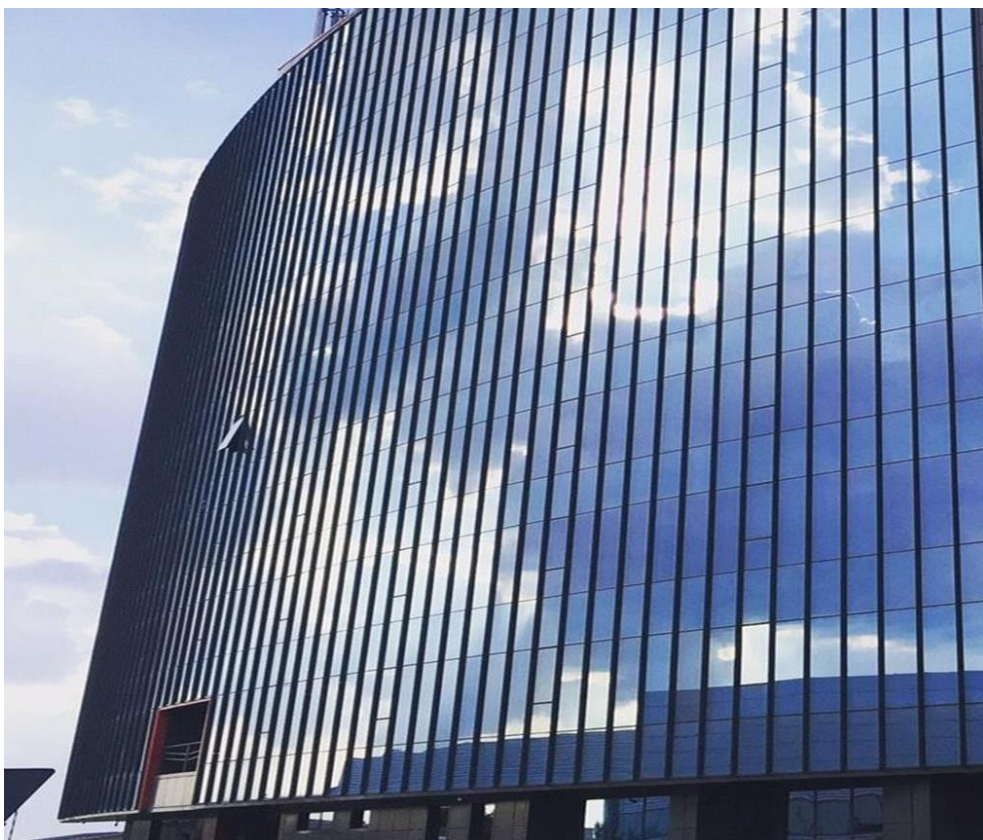


Pipera

Offices for Sale

CARACTERISTICS

- ▶ **AREA:** Pipera
- ▶ **Usable surface:** 8333 sqm
- ▶ **Built surface:** 12000 sqm
- ▶ **Land Surface:** 2400 sqm
- ▶ **Parking places:** 90
- ▶ **Construction year:** 2007
- ▶ **Maximum height:** S+P+M+10 E



FINISHES/EQUIPMENT

- ▶ **Others:** Parking, Security, Alarm system, Fire Protection, intercall, AC, Elevator, Heating System, Internet and Voice Connection , TV Cable, Asphalted access, Garage, Sandstone, Faience, Insulated Windows , open space/nivel; lumina naturala pe toate laturile; grupuri sanitare si bucatarie amenajate; climatizare-HVAC; sisteme moderne de telecomunicatii; generator de rezerva; control acces; securitate 24h/24h

DESCRIPTION

Office building offered for rent is situated in Pipera area, next to Porsche Nord showroom; The indicated area has known a great development in the last years.

Facilities:

- Open space / level;
- Natural light on all sides;
- Air conditioning-HVAC -4 pipes;
- technological floor;
- sprinkler system
- power generator;
- Parking places;
- Modern telecommunication systems

- Access control;
- Security 24h/24h;
- The building is ~60% rented

11,500,000 EUR + VAT

184.84 BITCOIN + VAT

6,262.73 ETHEREUM + VAT