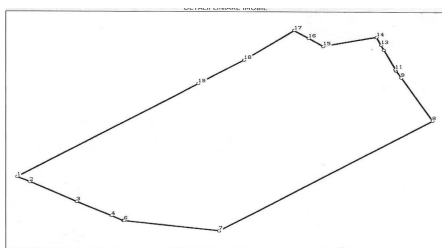


Chitila

Land for Sale

CARACTERISTICS

- ▶ **AREA:** Chitila
- ▶ **Usable surface:** 33656 sqm
- ▶ **End-use:** Industrial
- ▶ **Opening:** 85



DESCRIPTION

The land plot offered for sale is situated in the Northern area of Bucharest, benefiting of great access to DN 1 Bucuresti - Ploiesti and to the Ring Road. The described property is located on Ilfov county's territory and belongs to Chitila town.

Due to its location and to its large and generous opening to a main street, the land plot is perfectly suitable for warehouse/ storage area, showroom and offices.

Description:

Land plot area: 33,656 sqm;

Frontage: 85 m;

The land plot belongs to a company.

Utilities: electricity, gas, water;

28 EUR sqm + VAT

0.01 ETHEREUM sqm + VAT