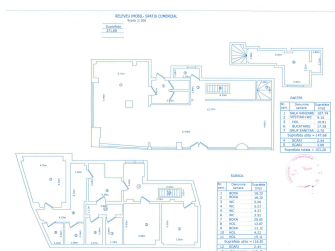


Romana Square

Commercial Spaces

CARACTERISTICS

- ▶ **AREA:** Romana Square
- ▶ **Usable surface:** 271.69 sqm
- ▶ **Floor:** S+P



DESCRIPTION

The commercial space is situated on Magheru Boulevard in the immediate vicinity from Lido hotel. Is situated on the ground floor and at the basement of a residential building on the corner, with a large shopping window at 2 sides and great visibility.

Facilities:

- 17,93 m shopping window;
- great visibility;
- sanitary group;
- possibility to arrange a terrace;

900,000 EUR

15 BITCOIN

313.47 ETHEREUM