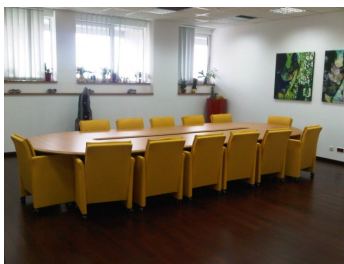


Dimitrie Pompei

Offices for Rent

CARACTERISTICS

- ▶ **AREA:** Dimitrie Pompei
- ▶ **Usable surface:** 3098.7 sqm
- ▶ **Parking places:** 100
- ▶ **Floor:** P, Et.1, Et.3, Et.4
- ▶ **Maximum height:** S+P+5E



Layout

Maintenance: 3.5 Euro/sqm/month + VAT

FINISHES/EQUIPMENT

- ▶ **Others:** AC, Elevator, Heating System, Internet and Voice Connection , Parquet, Sandstone, Faience, Insulated Windows

DESCRIPTION

Office building situated in Dimitrie Pompei area at only a few minutes away from Pipera subway station.

Facilities:

- open space
- in the kitchen separate installation of ventilation
- sanitary group and shower
- security, reception
- parking places

11 EUR sqm + VAT