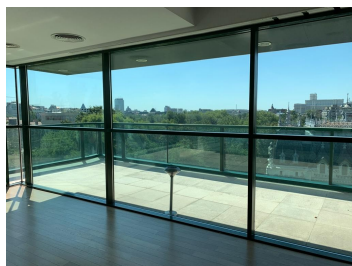
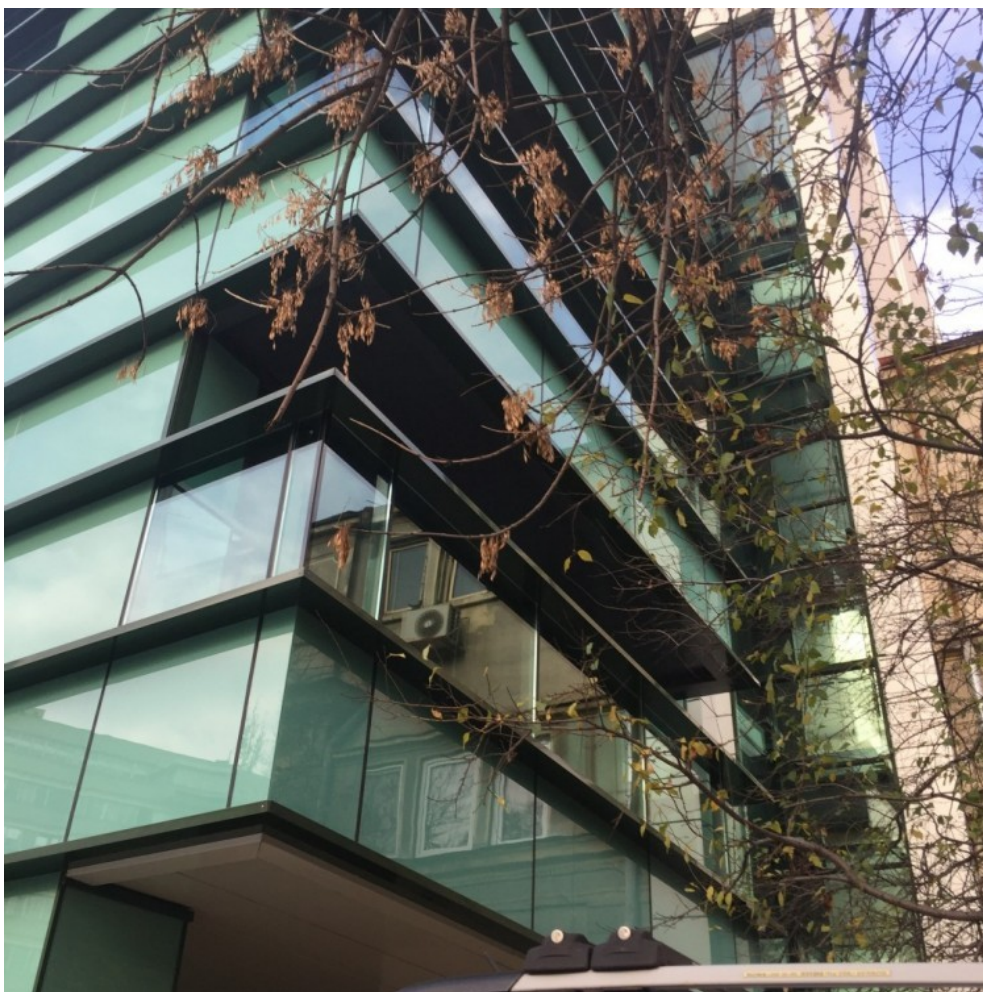


## Stirbei Voda

## Offices for Sale

### CARACTERISTICS

- ▶ **AREA:** Stirbei Voda
- ▶ **Usable surface:** 1600 sqm
- ▶ **Built surface:** 2380 sqm
- ▶ **Maximum height:** S+P+5E + M



### Layout

Available areas:

Basement: 450,8 sqm

Ground floor: 428,50 sqm

1st-4th Floor: 319,85 sqm

5th Floor: 316,55 sqm

Attic: 252,72 sqm

## FINISHES/EQUIPMENT

► **Others:** Parking, Elevator, Internet and Voice Connection , TV Cable, Asphalted access, Garage, Marmura, Parquet, Sandstone, Faience, Insulated Windows

---

## DESCRIPTION

Office building for sale situated on Stirbei Voda Boulevard, very close to Sala Palatului, Calea Victoriei and Cismigiu Park. The building is situated at only a few minutes away from Eroilor and Izvor subway station.

The building is provided with car elevator.