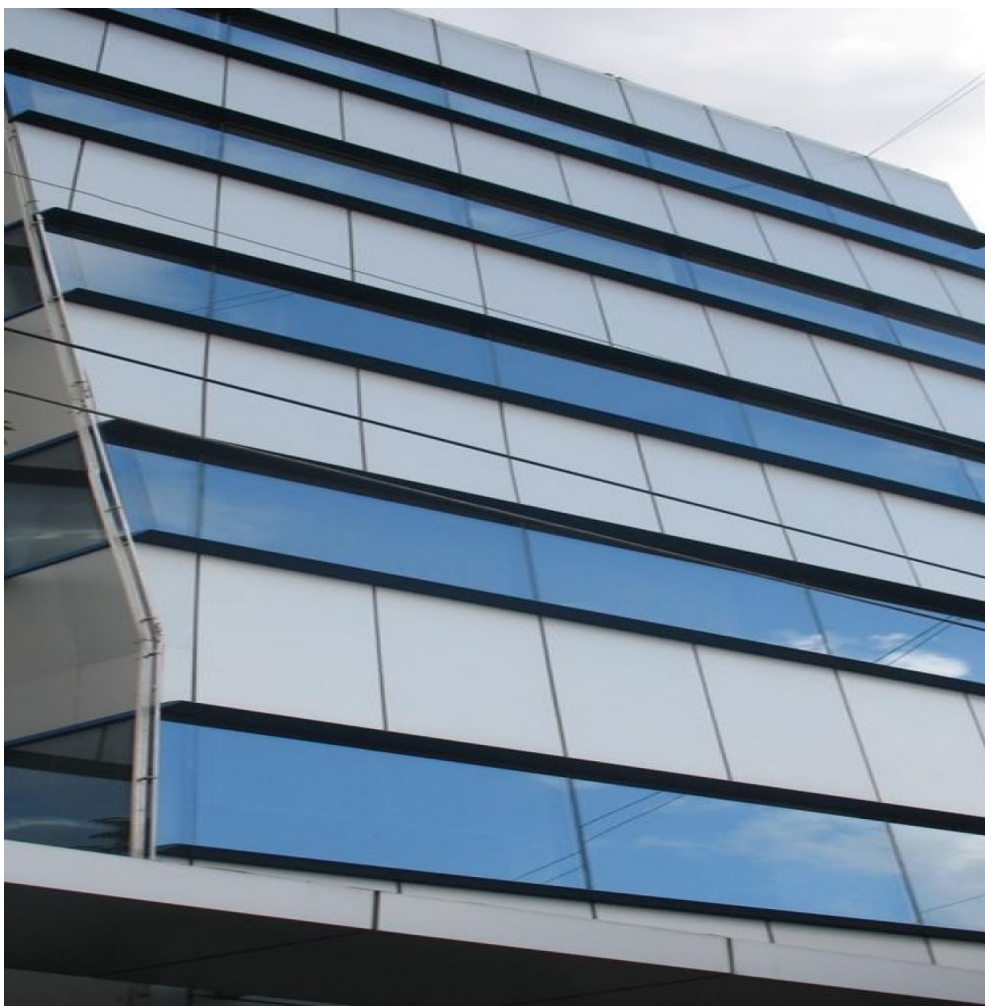


## Arch of Triumph

## Offices for Sale

### CARACTERISTICS

- ▶ **AREA:** Arch of Triumph
- ▶ **Usable surface:** 3051 sqm
- ▶ **Land Surface:** 857 sqm
- ▶ **Parking places:** 10
- ▶ **Maximum height:** S+P+5E



### Layout

Total usable area: 3,051 sqm

semi-basement: 529 sqm

Ground floor: 528 sqm

1st -3rd Floor: 489 sqm

4th Floor: 315 sqm

5th Floor: 212 sqm

## FINISHES/EQUIPMENT

► **Others:** AC, Heating System, Internet and Voice Connection , TV Cable, Sandstone, Faience, Insulated Windows

## DESCRIPTION

Office building situated in Kiseleff area, close to Victoriei square at only a few minutes away from Arcul de Triumf. The location allows easy access both to city center and to Bucharest`s Ring Road and Otopeni Airport.

Facilities:

- air conditioning -2 pipes system
  - suspended ceiling with built in lightning units
  - 24 hours units security
  - kitchen on each floor
  - 2 elevators;
- 
- gas fired central heating;
  - fully equipped sanitary groups

The office building is 70% rented.

4,150,000 EUR + VAT

67.07 BITCOIN + VAT

1,393.47 ETHEREUM + VAT