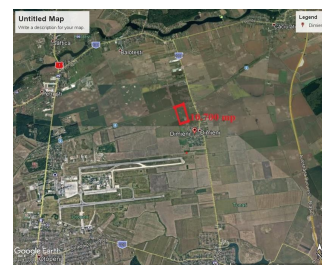
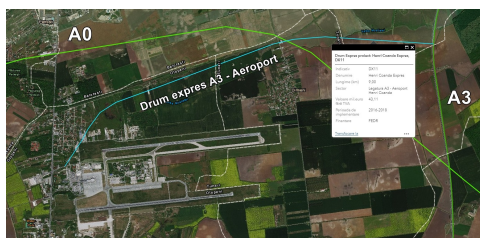
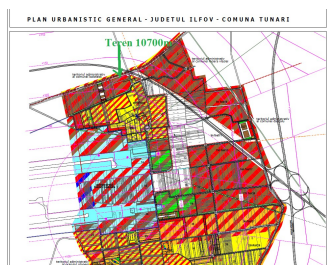


Tunari

Land for Sale

CARACTERISTICS

- ▶ **AREA:** Tunari
- ▶ **Usable surface:** 10700 sqm
- ▶ **Land Surface:** 10700 sqm
- ▶ **POT:** 40%
- ▶ **CUT:** 2
- ▶ **End-use:** Industrial
- ▶ **Opening:** 22
- ▶ **No. of openings:** 2



DESCRIPTION

The land plot offered for sale is situated in Northern area in Tunari, Dimieni village with frontage at the railway which connects Otopeni with the Airport area.

Land plot: 10,700 sqm

Frontage: double frontage 22 m

Utilities: electricity at the land plot's limit

Legal situation: Land owned by an individual;

15 EUR sqm