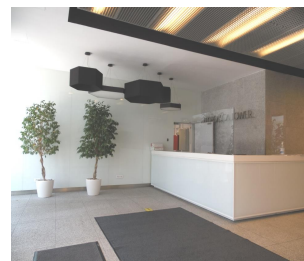
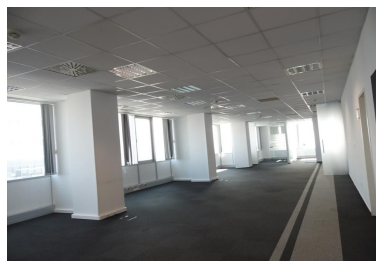


Barbu Vacarescu

Offices for Rent

CARACTERISTICS

- ▶ **AREA:** Barbu Vacarescu
- ▶ **Usable surface:** 887 sqm
- ▶ **Floor:** Et.9, Et.13
- ▶ **Maximum height:** 2S+ P + 13E



Layout

Available areas:

9th floor: 3709 sqm

13th floor: 517 sqm

Maintenance: 4.3 Euro/ sqm/ month + VAT

Underground parking place: 100
Euro/place/month + VAT

Outside parking place: 80 Euro/place/month
+ VAT

DESCRIPTION

The office spaces offered for rent is situated near by Barbu Vacarescu Boulevard, benefiting of easy access to all the means of transportation.

Amenities/ Facilities:

Glass curtain
Fixed and mobile windows
Suspended ceilings with light
Floating floor
24 hours security system
Fire detection system
Internet

Air conditioning system 4 pipes

card access control
Schindler X 2 elevator for 8 persons
Smoking balconies at each level
Finished bathrooms - glass halls
Marble in halls
Staircase with granite
Parking places

14.90 EUR sqm + VAT