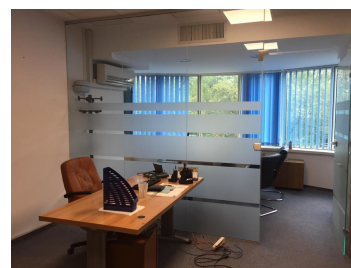


## Aviatorilor

### CARACTERISTICS

- ▶ **AREA:** Aviatorilor
- ▶ **Usable surface:** 1940 sqm
- ▶ **Land Surface:** 475 sqm
- ▶ **Parking places:** 10
- ▶ **Maximum height:** S+P+6E



### Layout

Surfaces:

1st, 2nd, 3rd, Floor: 259.39 sqm

Land plot: 475 sqm

Parking plots: 10 parking places;

**Rental prices: Euro 3,500/ month/ floor**

**Maintenance: 2 Euro/ sqm/month**

## **FINISHES/EQUIPMENT**

► **Others:** AC, Elevator, Heating System, Internet and Voice Connection , Insulated Windows , Faience, Sandstone, Storage rooms

---

## **DESCRIPTION**

The office building offered ofr rent si situated in the immediate vicinity of Charles de Gaulle Square and many important institutions, bank headquarters, musseums, hospitals, subway station and Herastrau Park.

Facilities:

reception,

own central heating;

false ceiling

2 elevators;

PC and phone wiring

The office building will be completely refurbished;