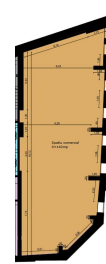
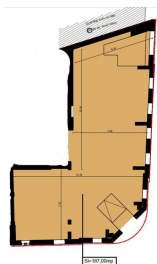
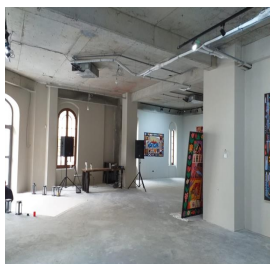


Icoanei Garden

Commercial Spaces for Rent

CARACTERISTICS

- ▶ **AREA:** Icoanei Garden
- ▶ **Usable surface:** 329 sqm
- ▶ **Construction year:** 2020
- ▶ **Maximum height:** P+D



FINISHES/EQUIPMENT

- ▶ **Others:** Heating System, Sandstone, Faience

DESCRIPTION

The space is located in a brand new building disposed in Gradina Icoanei area.

The space is disposed on:

Semi-basement: 142 sqm

Ground floor: 187 sqm

centralized cooling/ heating system

open space

2 sanitary groups;

It is suitable for: medical center, offices, showroom;

5,500 EUR + VAT

0.09 BITCOIN + VAT

1.92 ETHEREUM + VAT