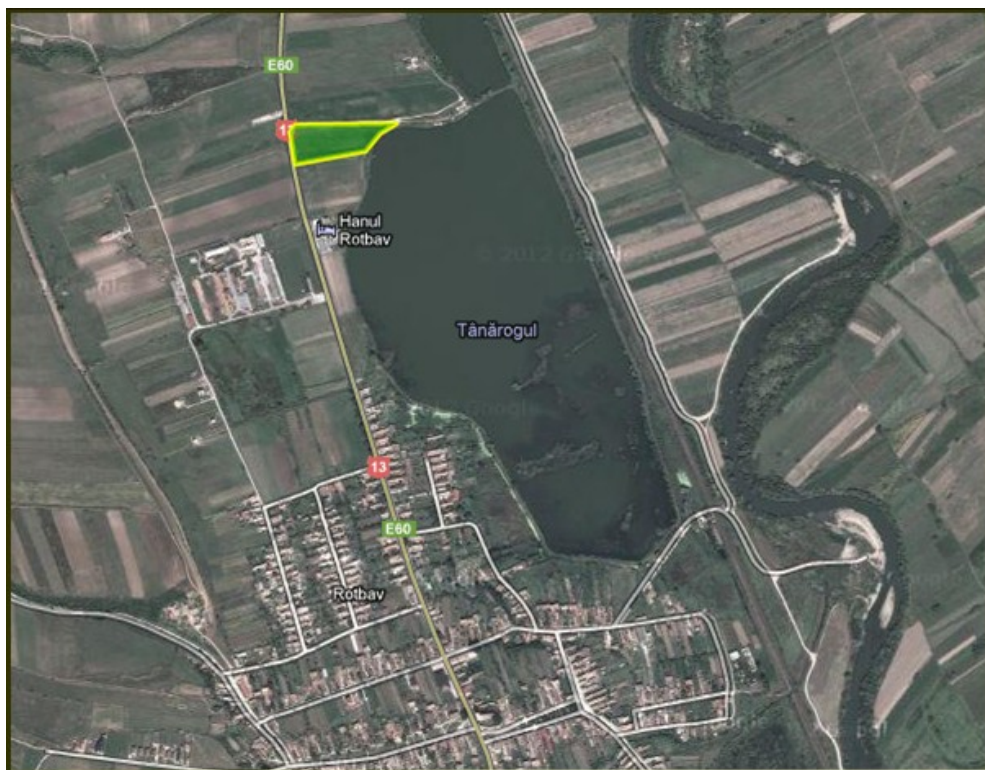


Brasov

Land for Sale

### CARACTERISTICS

- ▶ **AREA:** Brasov
- ▶ **Land Surface:** 23600 sqm
- ▶ **End-use:** Rezidential



### DESCRIPTION

The land plot is situated close to Brasov, at only 24 km North on E60 and with frontage to Rotbav lake. There are 5 parcels which can be sold individually, having street frontage to E60 and the lake in the back, being perfect suitable for residential or recreational development.

2 x 5,000 sqm

1 x 5,400 sqm

1 x 7,500 sqm

1 x 700 sqm

Brasov knew a wide development during the last years due to many foreign investments.

20 EUR sqm + VAT

0.01 ETHEREUM sqm + VAT