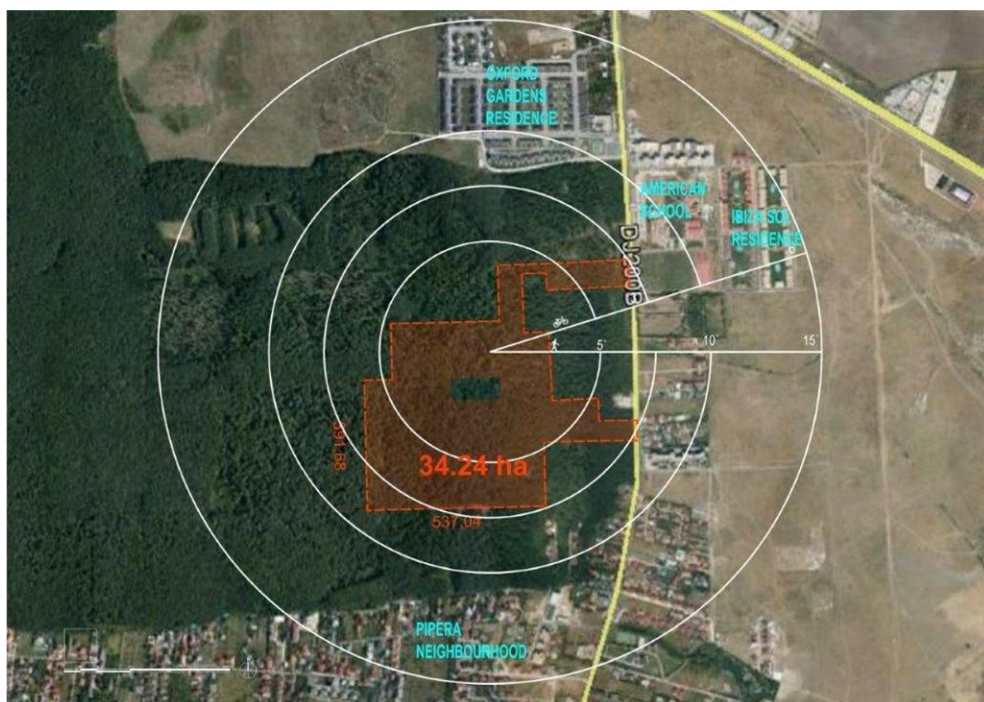


Iancu Nicolae

Land for Sale

### CHARACTERISTICS

- ▶ **AREA:** Iancu Nicolae
- ▶ **Usable surface:** 342400 sqm
- ▶ **Land Surface:** 342400 sqm
- ▶ **End-use:** Constructii Retail
- ▶ **No. of openings:** 2



### DESCRIPTION

The land plot offered for sale is in fact a forest in Northern area, having a double access in Pipera Road. Pipera - Iancu Nicolae area is well known through a strong development both residential and commercial.

Also, in that area you'll find the most important private schools.

Urbanism information:

The land plot is situated in Voluntari, Ilfov.

The land plot partially urban (50 m from Pipera Road - M3 area)

The remaining part of the land plot is included in V5, adventure park.

Surface: 342.400 sqm

Frontage: 2 frontages to Pipera Road

Legal situation: Land plot owned by a company.

13.20 EUR sqm + VAT