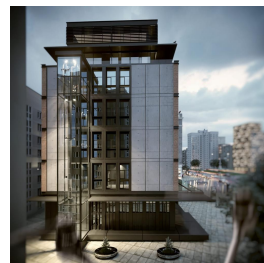
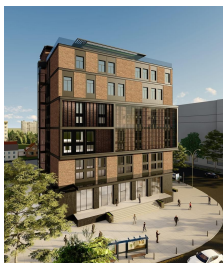


13 Settembre

CARACTERISTICS

- ▶ **AREA:** 13 Settembre
- ▶ **Usable surface:** 3943 sqm
- ▶ **Maximum height:** S+P+9E



Layout

Surfaces:

The building is disposed on B+Gf+9E

Total usable area: 3.943 sqm

Basement: 455 sqm

Ground floor: 492.87 sqm

1st Floor: 33 sqm

2nd Floor: 492.9 sqm

3rd Floor: 497.7 sqm

4th Floor: 111.4 sqm

5th Floor: 509.3 sqm

6th Floor: 106.29 sqm

7th Floor: 521 sqm

8th Floor: 520 sqm

9th Floor: 204 sqm + terrace 285 sqm

DESCRIPTION

The building offered for rent is situated 13 Septembrie area, in the immediate vicinity of Parliament Palace, JW Marriott Bucharest Grand Hotel and at only a few minutes distance from Cotroceni area. The building is situated at only a few minutes distance from 2 subway stations. In the neighborhoods there are medical centers, hospitals, hotels, schools, Catedrala Mantuirii Neamului, public institutions, parks and office buildings.

The building is perfectly suitable for offices or a hospital or medical center. At this stage the building can be configured as it is needed. The building has an usable height per level between 5.5 m - 3.5 m.

5 parking place in the courtyard

modern finishes and amenities;