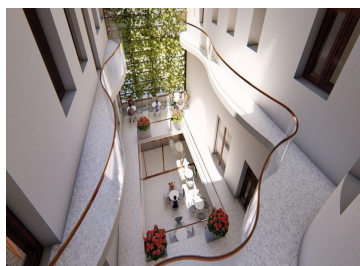


Calea Victoriei

Offices for Sale

CARACTERISTICS

- ▶ **AREA:** Calea Victoriei
- ▶ **Usable surface:** 2626 sqm
- ▶ **Built surface:** 3000 sqm
- ▶ **Land Surface:** 517 sqm
- ▶ **Construction year:** 1923
- ▶ **Maximum height:** S+P+4E



DESCRIPTION

The historical building presented here is situated on Victoriei Way very close to the old city center.

This area is frequented by tourists, becoming in recent years a pole of attraction.

The building "Oficiul de Vanzare al Fabricii de Hartie" was built according with a project of a well known architect called Paul Smarandescu, somewhere around 1923-1924. The architect Paul Smarandescu was one of the most prolific Romanian architects who distinguished himself by the numerous buildings in neo-Romanian style.

Facilities:

2 interior staircase

wodden carpentry

the building needs to be cobsolidated and renovated

24 apartments and office spaces on the ground floor.

3,500,000 EUR + VAT

58.59 BITCOIN + VAT

1,191.66 ETHEREUM + VAT