

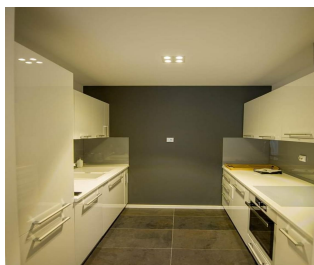
Baneasa

Apartment for Rent

2 rooms

CARACTERISTICS

- ▶ **AREA:** Baneasa
- ▶ **Usable surface:** 60 sqm
- ▶ **No. of Bedrooms:** 1
- ▶ **No. of Rooms:** 2
- ▶ **No. of Bathrooms:** 1
- ▶ **Parking places:** 1
- ▶ **Floor:** 2
- ▶ **Construction year:** 2015
- ▶ **Maximum height:** S+P+4E
- ▶ **No. of Balconies:** 1



FINISHES/EQUIPMENT

- ▶ **Furniture:** Furnished
- ▶ **Others:** Video Surveillance , Video Inter call , AC, Heating System, Internet and Voice Connection , TV Cable, Storage rooms, Asphalted access, Garage, Marmura, Parquet, Sandstone, Faience, Insulated Windows

DESCRIPTION

The apartment is situated in Northern side of Bucharest, in 1st District, in the immediate vicinity of Herastrau Park which is closer than 500 m. The apartment is easy accessible both from Bucuresti - Ploiesti Road, Ring Road, Otopeni Airport and from city center.

Description:

The apartment is beautifully arranged having modern amenities and furniture of a very good quality.

The apartment is divided in 2 room: large and light living room, 1 bedroom, 1 bathroom, 1 kitchen, 1 large hall and a 10 sqm terrace.

The apartment has one parking place in the underground;

Amenities:

- parquet, ceramic tiles;
- furnished and fully equipped kitchen;
- terrace;

900 EUR + VAT

0.01 BITCOIN + VAT

0.31 ETHEREUM + VAT