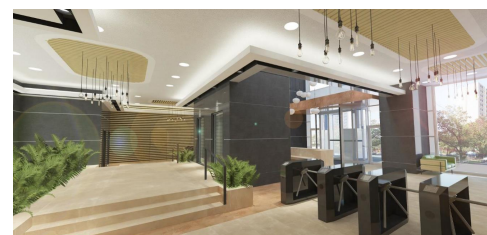
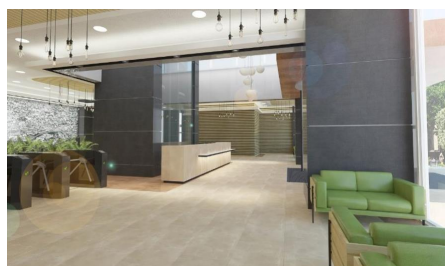


Timisoara Blvd

Offices for Rent

CARACTERISTICS

- **AREA:** Timisoara Blvd
- **Usable surface:** 1050 sqm
- **Floor:** Etaj 2
- **Maximum height:** S+P+2E



Layout

Rental prices:

2nd Floor: 1,050 sqm

11.5 €/ sqm/ month + VAT

Maintenace: 3,5 €/ sqm/ month + VAT

65 €/ parking place/ month + VAT

FINISHES/EQUIPMENT

- **Others:** Video Surveillance , AC, Elevator, Internet and Voice Connection , TV Cable, Administrare, Garage

DESCRIPTION

Office spaces for rent situated in western side of Bucharest at the crossroad between Timisoara Boulevard and Lujerului, with easy access to all means of transportation including the subway.

Facilities:

- open space;
- usable height is 5 m;
- the space will be changed in order to be used for offices, accordingly with the tenants needs;
- air conditioning;

- power generator;
- 24 h security system;
- elevator of great capacity;
- kitchenette;
- parking places;

Available immediately.

11.50 EUR sqm + VAT