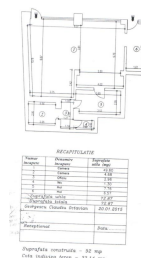
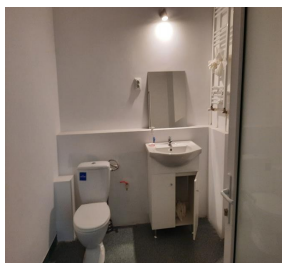


Gara de Nord

Commercial Spaces for Rent

CARACTERISTICS

- ▶ **AREA:** Gara de Nord
- ▶ **Usable surface:** 72.68 sqm
- ▶ **Land Surface:** 33.14 sqm
- ▶ **Maximum height:** P



FINISHES/EQUIPMENT

- ▶ **Others:** AC

DESCRIPTION

The commercial space is situated in the Northern Railway Station area, benefiting of a great visibility.

Total usable area: 72.68 sqm

Afferent land: 33.14 sqm

The space is disposed on the ground floor.

Facilities:

7 m opening

sanitary group

3 air conditioning

1,100 EUR

0.02 BITCOIN

0.38 ETHEREUM