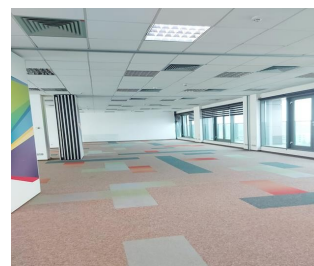
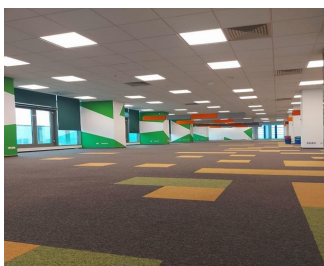
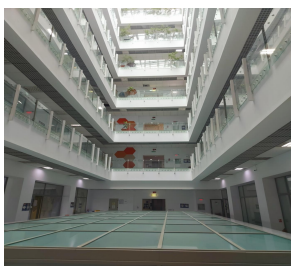


## Aviatiei

## Offices for Rent

### CARACTERISTICS

- ▶ **AREA:** Aviatiei
- ▶ **Usable surface:** 9238 sqm
- ▶ **Built surface:** 13235 sqm
- ▶ **Land Surface:** 4071 sqm
- ▶ **Construction year:** 2006
- ▶ **Maximum height:** 2S+P+8E



### FINISHES/EQUIPMENT

- ▶ **Others:** Security, Video Surveillance , Alarm system, Fire Protection, AC, Elevator, Heating System, Internet and Voice Connection , TV Cable, Scara de serviciu, Storage rooms, Asphalted access, Administrare, Sandstone, Faience, Insulated Windows , cladire clasa A; podea suprainaltata; receptie; acces control;

### DESCRIPTION

A class office building for rent situated in northern side of Bucharest, in Pipera area very close to many other business centers. There are buses which connect the building with the subway station Pipera.

Facilities:

- open space and partition;
- 5 elevators for persons, 2 staircase;
- false ceiling, raised floor;
- 2 power generator;
- BMS;
- IT & Data System;
- heating / cooling system 4 pipes;
- security 24h, alarm system;
- reception;
- parking places underground 180 and outside 74 (50 Euro/ place)