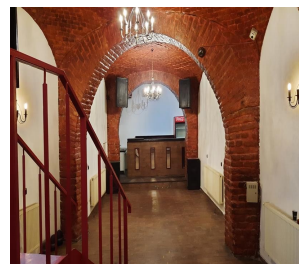
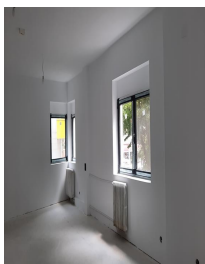
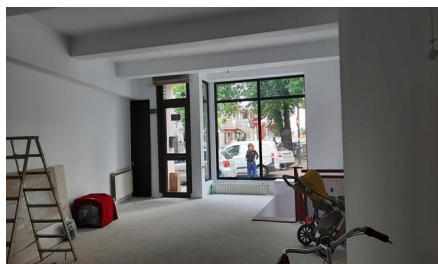


Mihai Eminescu

Commercial Spaces

CARACTERISTICS

- ▶ **AREA:** Mihai Eminescu
- ▶ **Usable surface:** 348.71 sqm
- ▶ **Built surface:** 439.58 sqm
- ▶ **Land Surface:** 158 sqm
- ▶ **Construction year:** 1930
- ▶ **Maximum height:** S+P+E+M



Layout

Built area: 439.58 sqm

Land plot: 158 sqm

Usable area: 348.71 sqm

Basement: 70.09 sqm

Ground floor: 131.05 sqm

1st Floor: 73.38 sqm

Attic: 74.19 sqm

DESCRIPTION

The building is situated in the center of Bucharest in Mihai Eminescu area benefiting of an exceptional location and exposure. It was built in 1930 and rehabilitated and consolidated in 1996.

Facilities:

The building is perfectly suitable for coffee shop, restaurant, pub and offices;

the basement is perfectly arranged for commercial activities;
the levels are suitable for any activity;