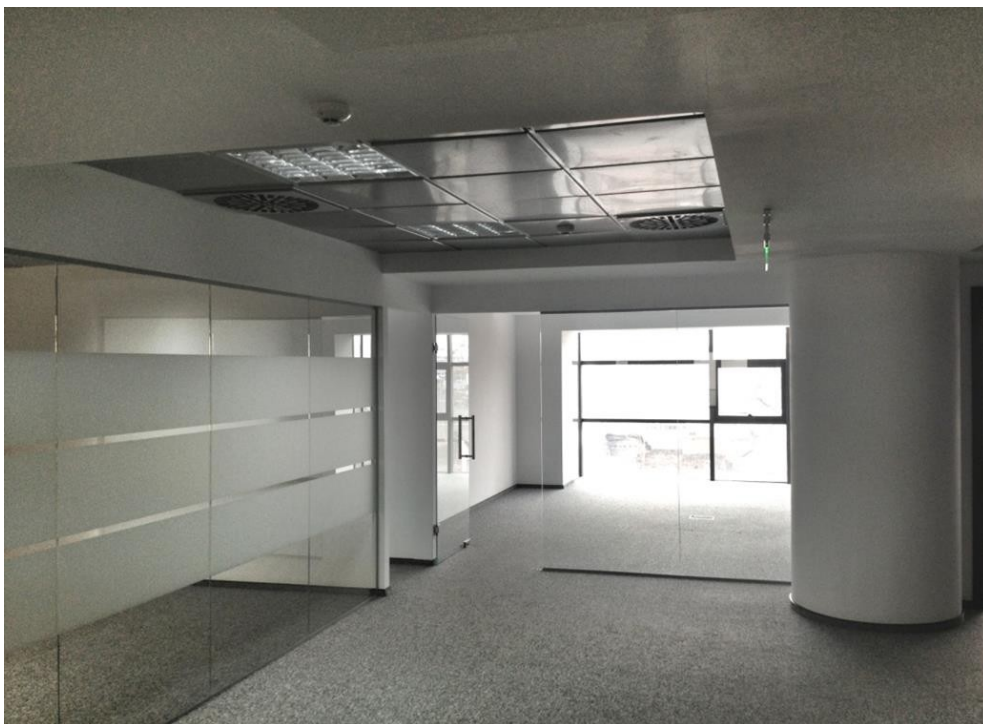


## Victoriei

### CARACTERISTICS

- ▶ **AREA:** Victoriei
- ▶ **Usable surface:** 335 sqm
- ▶ **Floor:** Et.2
- ▶ **Maximum height:** S+P+6E



### DESCRIPTION

The office spaces offered for rent are situated in the immediate vicinity of Victoriei Square very close to the historical area, Buzesti and Gara de Nord.

The building has a great access to all means of transportation.

Facilities:

own central heating

fan coil air conditioning system;

PC and phone network;

false ceiling

elevator

2 sanitary groups

parquet, ceramic tiles

2 Parking places: 150 Euro/ month + VAT

4,000 EUR + VAT

0.07 BITCOIN + VAT

1.35 ETHEREUM + VAT