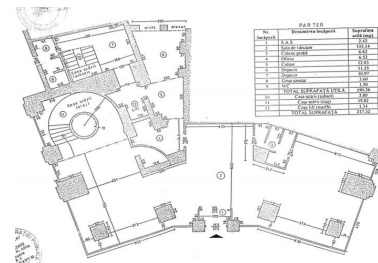
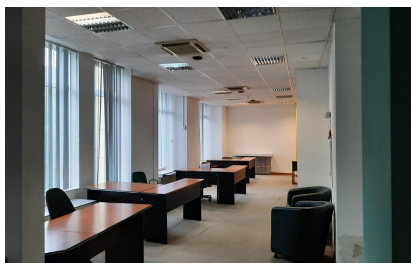
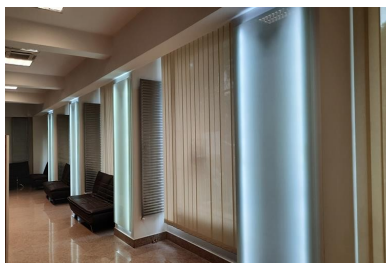
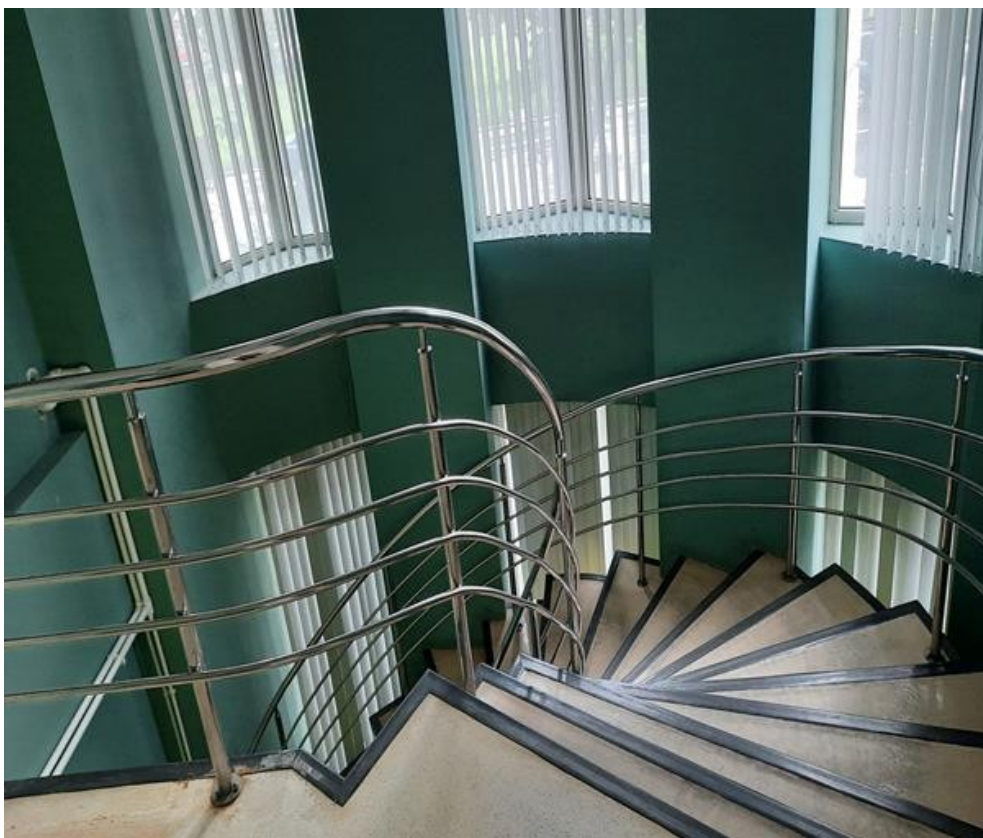


13 Septembrie

Commercial Spaces for Rent

### CARACTERISTICS

- ▶ **AREA:** 13 Septembrie
- ▶ **Usable surface:** 1239.8 sqm



### Layout

Usable area: 1,239.8 sqm

Ground floor: 454.17 sqm

1st Floor (mezzanine): 628.31 sqm

Basement: 157.32 sqm

### DESCRIPTION

The commercial space offered for rent is situated in 13 Septembrie area, close to Parliament Palace and JW Marriott Bucharest Grand Hotel.

The commercial space is situated on Basement + Ground floor + 1st Floor (Mezzanine), having a frontage of 10.5 m.

Facilities:

- 2 access doors in front and 2 access doors for suppliers;
- Staircase from the basement to mezzanine;
- 2 staircases between ground floor and mezzanine;

2 toilets rooms on the ground floor;  
3 toilets on the mezzanine;  
Heating system with radiators + centralized heating/ cooling system;

15,000 EUR + VAT

0.23 BITCOIN + VAT

4.57 ETHEREUM + VAT