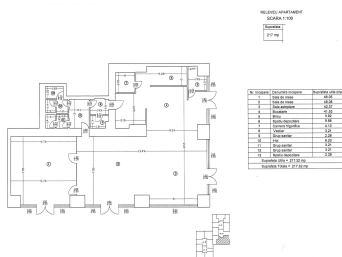
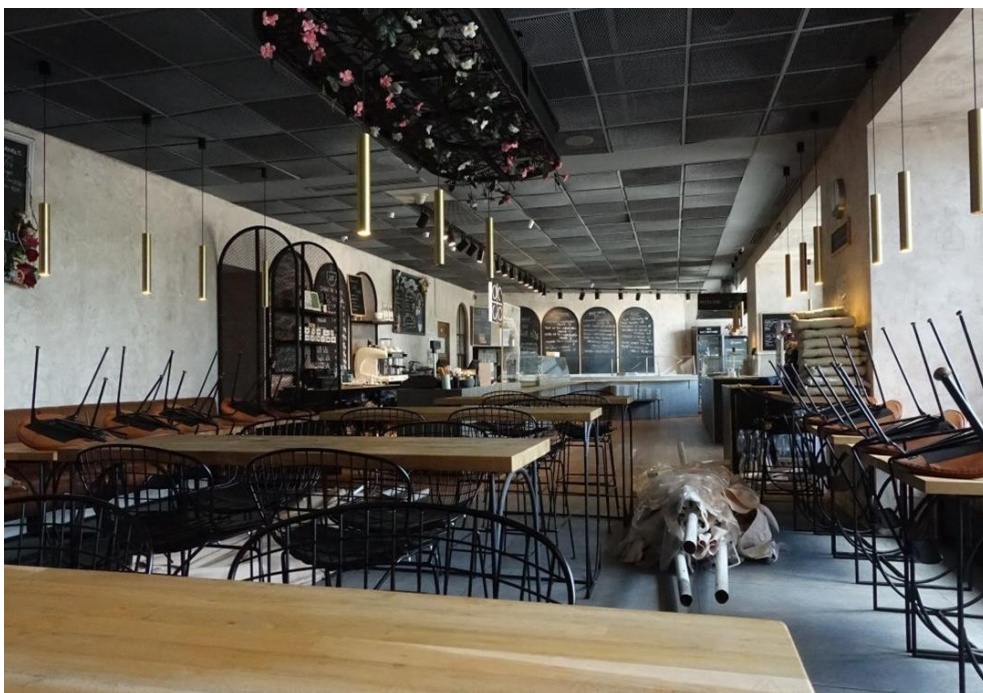


Barbu Vacarescu

Commercial Spaces for Rent

CARACTERISTICS

- ▶ **AREA:** Barbu Vacarescu
- ▶ **Usable surface:** 217.32 sqm
- ▶ **Floor:** P
- ▶ **Construction year:** 2012
- ▶ **Showcase:** 32



DESCRIPTION

The commercial space offered for rent is situated in northern side of Bucharest at the ground floor of a residential building, built in 2012. The space is disposed on the ground floor having a shopping window of 32 m;

Facilities:

- Arranged for public food;
- 4 entrances;
- large terrace;

5,725 EUR

0.10 BITCOIN

1.95 ETHEREUM