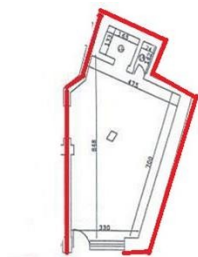


## Magheru Blvd

## Commercial Spaces for Rent

### CARACTERISTICS

- ▶ **AREA:** Magheru Blvd
- ▶ **Usable surface:** 37.2 sqm
- ▶ **Floor:** P



### DESCRIPTION

Commercial space for rent situated in the downtown area close to Hilton Hotel and Romanian Athenaeum, benefiting of a great visibility and good pedestrian traffic.

The commercial space is disposed on Ground floor.

Facilities:

arranged

sanitary group

3.42 m shopping window

Total usable: 37.2 sqm

1,300 EUR

0.02 BITCOIN

0.45 ETHEREUM