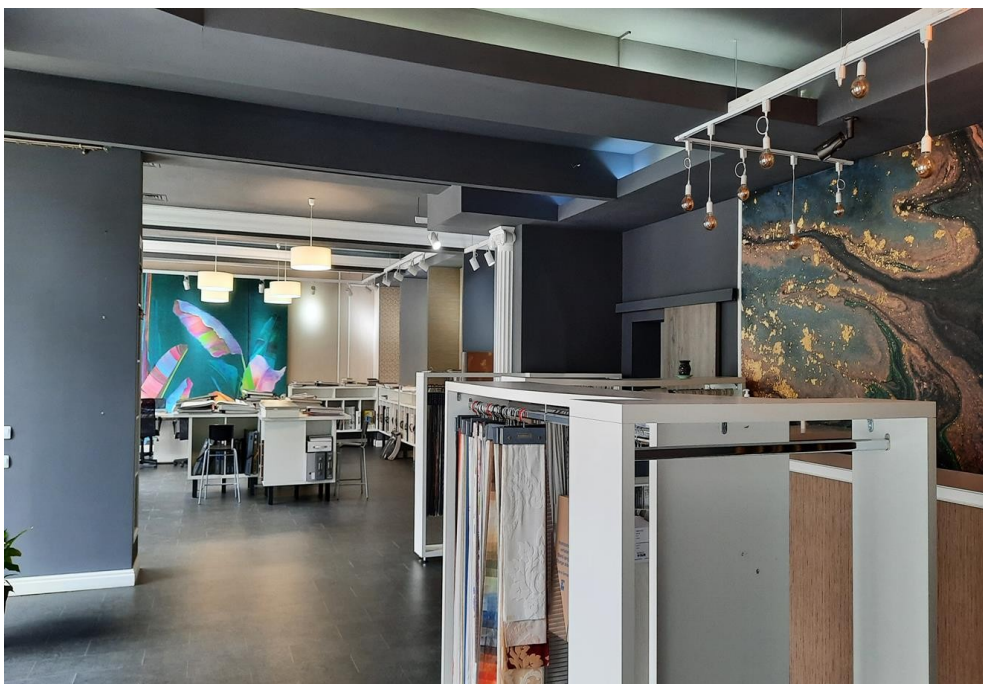


Banu Manta

Commercial Spaces for Rent

CARACTERISTICS

► **AREA:** Banu Manta



DESCRIPTION

The commercial space is situated in Banu Manta area very close to Victoriei Square.

The space is disposed on the ground floor.

Facilities:

shopping window 25 m

3 sanitary groups

own gas central heating

access door for suppliers

Available immediately.

Rental price:

3,500 Euro/ month - No VAT

3,000 Euro/ sqm - first year

3,000 EUR

0.05 BITCOIN

0.98 ETHEREUM