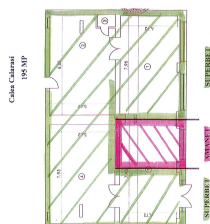


Calea Calarasilor

Commercial Spaces

CARACTERISTICS

- ▶ **AREA:** Calea Calarasilor
- ▶ **Usable surface:** 175 sqm
- ▶ **Built surface:** 195 sqm
- ▶ **Floor:** P



DESCRIPTION

The commercial space is located on Calea Calarasilor, in the intersection with Delea Veche street.

The space is on the ground floor.

It is divided into 2 parts:

Usable area=155 sqm, rented until September 2026

Usable area= 20 sqm, rented until February 2022

Both contracts are closed.

950,000 EUR

12.51 BITCOIN

370.23 ETHEREUM