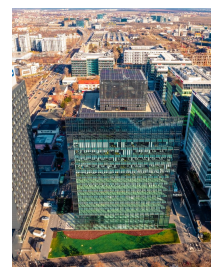
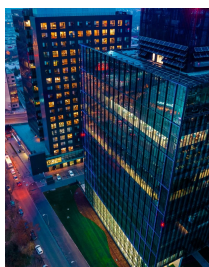
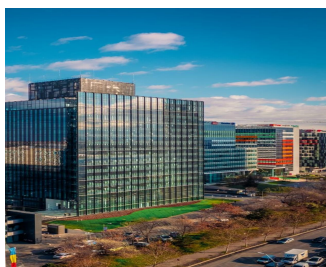


## Barbu Vacarescu

### CARACTERISTICS

- ▶ **AREA:** Barbu Vacarescu
- ▶ **Usable surface:** 29000 sqm
- ▶ **Parking places:** 451
- ▶ **Maximum height:** 3S+P+15E



### Layout

Maintenance: 3.5 Euro/ sqm/month + VAT

Minimum area available for rent: 267 sqm

### FINISHES/EQUIPMENT

- ▶ **Others:** Fire Protection, AC, Elevator, Internet and Voice Connection , Insulated Windows , Faience, Sandstone, Parquet, Garage, Administrare

### DESCRIPTION

The office building offered for rent is situated very close to Herastrau Park and Nordului Road. The unicity of the location is given by the access to DN1, Baneasa Shopping City or Otopeni Airport. The building benefits of easy access to all means of transportation, Aurel Vlaicu subway station which is at only a few minutes distance.

Facilities:

- offices with partition and open space;
- video surveillance;
- fire prevention system;
- green building;
- modern wiring system for PC and phones;
- natural light
- air conditioning - HVAC
- power generator;
- 451 parking places;

16 EUR sqm + VAT