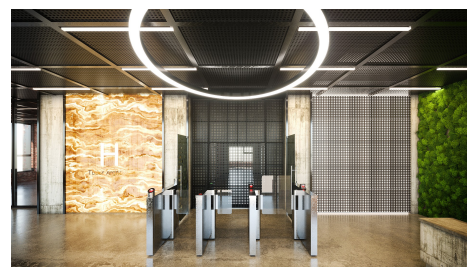
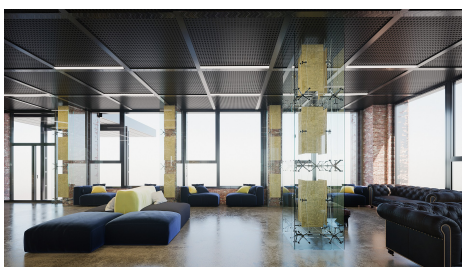
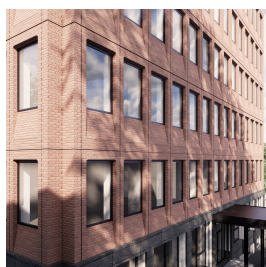


Universitate

CARACTERISTICS

- ▶ **AREA:** Universitate
- ▶ **Usable surface:** 7000 sqm
- ▶ **Floor:** D, P, Et. 4 - 6



Layout

Total area: 7,000 sqm

Available area:

Semi-basement: 669 sqm

Ground floor: 670 sqm

4th - 6th Floor: 200 -705 sqm

Maintenance: 3.5 Euro/ sqm +VAT/ month

FINISHES/EQUIPMENT

► **Others:** Fire Protection, Elevator, Internet and Voice Connection , Insulated Windows , Faience, Sandstone, Parquet, Garage, Administrare

DESCRIPTION

The office building is situated in the center of Bucharest, close to Universitate Square and Magheru Boulevard.

Facilities:

false ceiling, carpet,

24 hours security

17 EUR sqm + VAT

0.01 ETHEREUM sqm + VAT