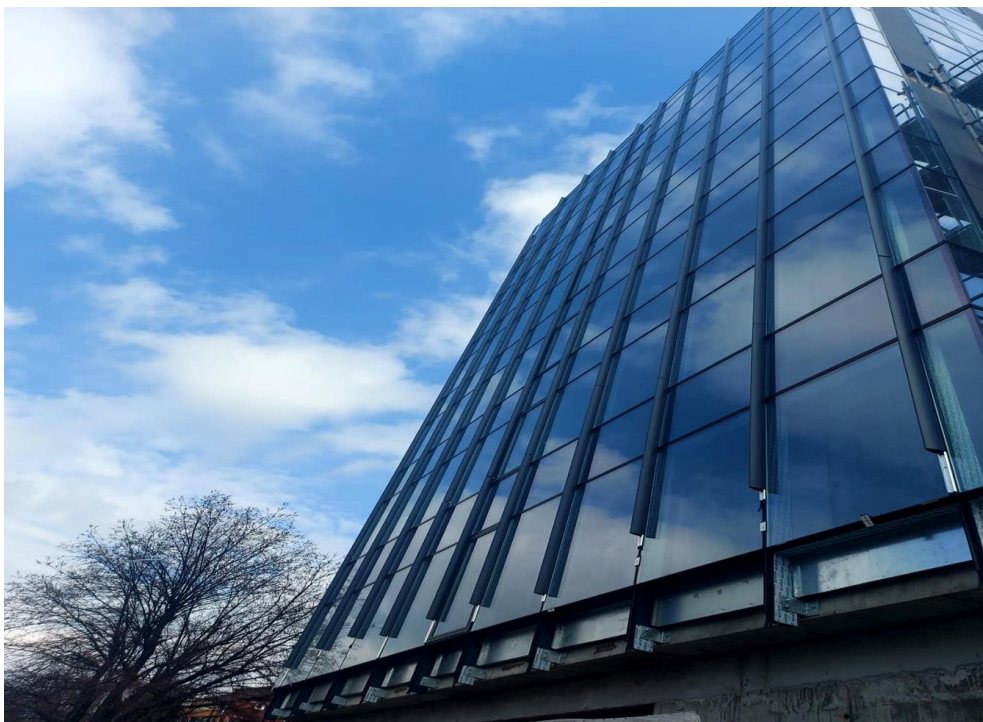


## Muncii Square

### CARACTERISTICS

- ▶ **AREA:** Muncii Square
- ▶ **Usable surface:** 2000 sqm
- ▶ **Maximum height:** 2S+P+7E



### DESCRIPTION

The office building is situated in the center of Bucharest in an area with a very good development, on Decebal boulevard, at only a few minutes distance to "Piata Muncii" subway station.

The building will be finishes according with the tenants needs.

Parking places: 10;

Current status: unfinished;

Delivery date: after 3 months from the signing of an agreement;

17 EUR sqm