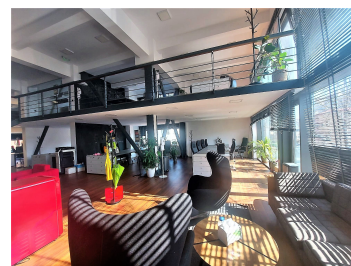
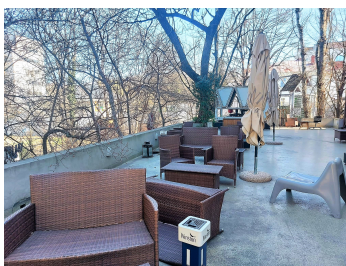
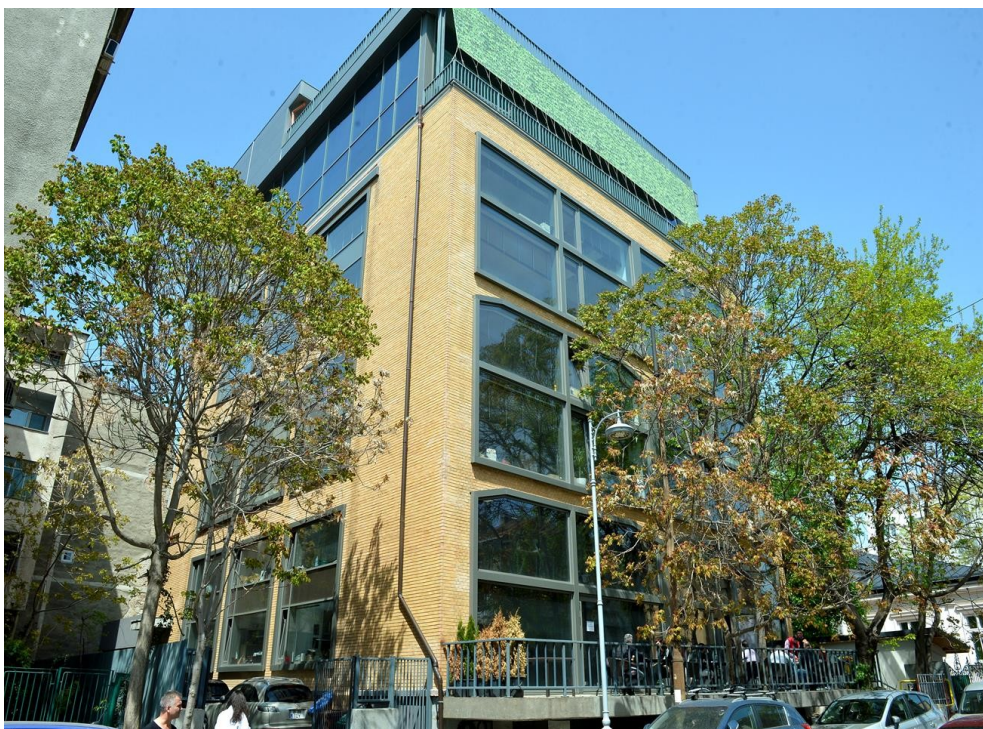


Calea Victoriei

Offices for Rent

CARACTERISTICS

- ▶ **AREA:** Calea Victoriei
- ▶ **Usable surface:** 630 sqm
- ▶ **Parking places:** 2
- ▶ **Floor:** Et.1
- ▶ **Construction year:** 2016
- ▶ **Maximum height:** S+P+6E



Layout

Available area:

1st Floor: 630 sqm

Terrace: 70 sqm

Prices:

4.5 Euro/sqm/month + VAT - maintenance

10 Euro/sqm/month + VAT -terrace

FINISHES/EQUIPMENT

- ▶ **Others:** Alarm system, AC, Elevator, Internet and Voice Connection , TV Cable

DESCRIPTION

Office building situated close to Calea Victoriei and Romana Square benefiting of great access to all means of transportation. Also very close to the retail space is Hilton Hotel, Golden Tulip si Novotel.

Facilities:

- easy access

- arranged and divided; - PC and phone network;
- 2 parking places
- reception and security
- air conditioning — fan coil; - elevator;

17 EUR sqm + VAT