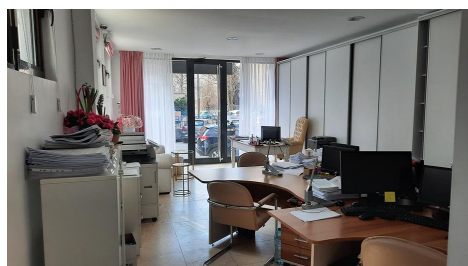


## Herastrau

## Offices for Sale

### CARACTERISTICS

- ▶ **AREA:** Herastrau
- ▶ **Usable surface:** 195 sqm
- ▶ **Maximum height:** D+P+1E+M



### Layout

Land plot: 99 sqm

Usable area: 194.19 sqm + 22.75 sqm terrace;

Semi-basement: 30 sqm

Ground floor: 54.37 sqm

1st Floor: 76 sqm

Attic: 33.82 sqm + terrace 22.75 sqm

### DESCRIPTION

The building is situated in Northern side of Bucharest at only a few minutes distance from Herastrau Park.

Facilities:

own central heating

modern amenities

fully renovated and modernized in 2013

1,190,000 EUR

16.04 BITCOIN