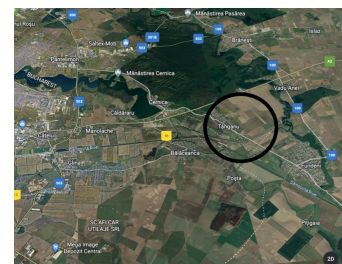
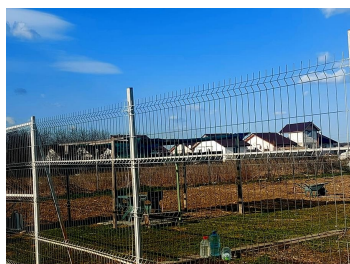
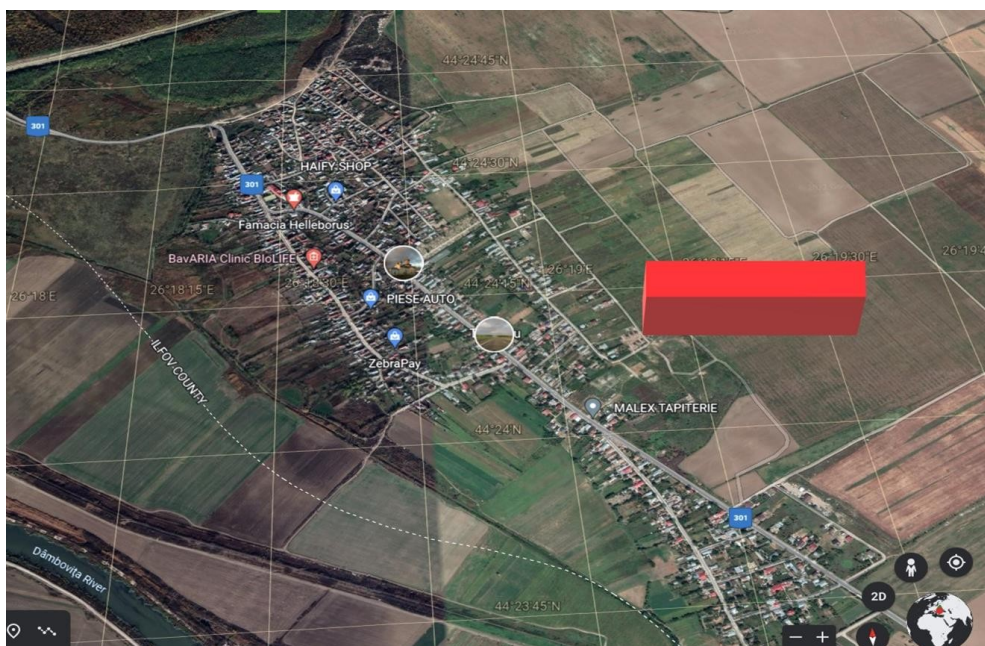


Cernica

Land for Sale

CARACTERISTICS

- **AREA:** Cernica
- **Land Surface:** 20000 sqm
- **End-use:** Rezidential



DESCRIPTION

The land plot is situated in Tanganu - Cernica village, with large frontage to a local road, close from Ring Road and A2 Bucuresti - Constanta Highway.

Land plot: land plots between 1000 sqm and 20.000 sqm

Frontage: to a local paved road;

Utilities: electricity, gas very close;

Legal situation: the land plot is owned by an individual.

30 EUR sqm

0.01 ETHEREUM sqm