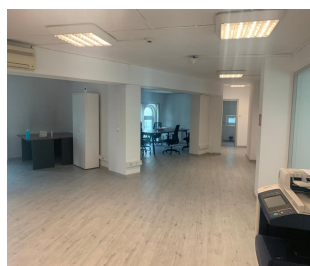
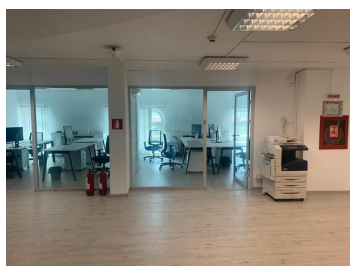
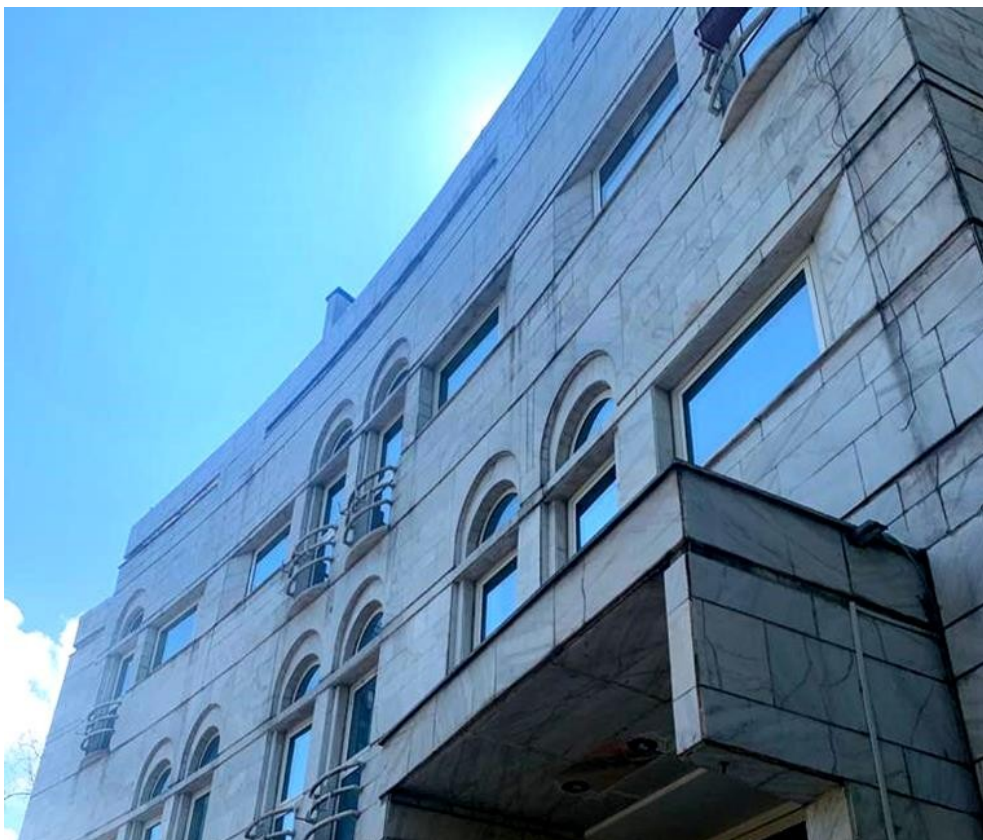


Charles de Gaulle Square

CARACTERISTICS

- ▶ **AREA:** Charles de Gaulle Square
- ▶ **Usable surface:** 200 sqm
- ▶ **Floor:** 4
- ▶ **Maximum height:** D+P+4E



DESCRIPTION

The office building situated in Charles de Gaulle area is close to all means of transportation and to many point of interest in the city. Vere close you

Il find Herastrau Park, Kiseleff Boulevard and the access to Baneasa Shopping City and Internationala Airport Bucharest is very easy.

Facilities:

elevator

sanitary groups

air conditioning

Maintenance at cost.

15 EUR sqm + VAT

0.01 ETHEREUM sqm + VAT