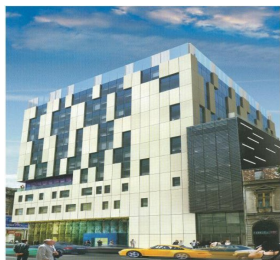


Calea Victoriei

Offices for Rent

CARACTERISTICS

- ▶ **AREA:** Calea Victoriei
- ▶ **Usable surface:** 2700 sqm
- ▶ **Floor:** Mz, Et.2, Et.3, Et.4
- ▶ **Maximum height:** 3S+P+M+9 E



Layout

Available area:

Mezzanine: 600 sqm

2nd Floor: 850 sqm

3rd Floor: 850 sqm

4th Floor: 400 sqm

Rental prices:

19 €/sqm/month + VAT

4.75 €/sqm/month + VAT– maintenance

DESCRIPTION

Office building for rent situated on Calea Victoriei very close to Victoriei Square.

Facilities:

- open space/level
- high class amenities specify to that A class office building
- false ceiling
- air conditioning system/ heating system
- security
- reception
- 6 parking places/ floor.

19 EUR sqm + VAT

0.01 ETHEREUM sqm + VAT