

Corbeanca

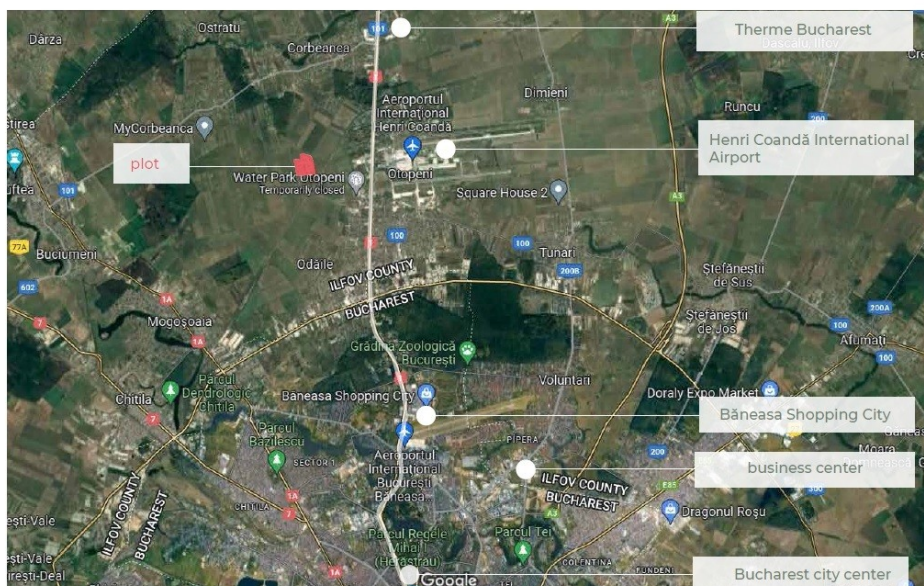
Land for Sale

CARACTERISTICS

- **AREA:** Corbeanca
- **Land Surface:** 330000 sqm
- **End-use:** Rezidential

LOCATION

points of interest



ACCESSIBILITY



FUNCTIONAL AREAS



DESCRIPTION

The site is located in Corbeanca commune, Ilfov county near Bucharest, its main connection to the city being the DN1 highway, and sitting at approximately 10 minutes away by car from the Henri Coandă International Airport.

With a surface of 33 Ha, the site aims to become a residential pillar in the Northern area of Bucharest, having emerged as a general need due to the environmental factors.

Points of interest:

- the continuous expansion of residential buildings in the capital city (in 2021 the number of analysed accommodations in Bucharest increased by 5.6% in comparison to the previous year, while the number of houses and apartments sold in areas adjacent to Bucharest increased by almost 37%);
- the site's proximity to the airport;
- the proximity to commercial and recreation centres;