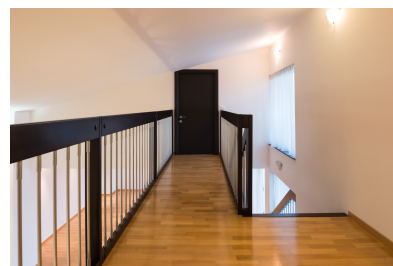


Aviatorilor

Offices for Rent

CARACTERISTICS

- ▶ **AREA:** Aviatorilor
- ▶ **Usable surface:** 291 sqm
- ▶ **Built surface:** 372 sqm
- ▶ **Parking places:** 2
- ▶ **Floor:** Et.5
- ▶ **Maximum height:** S+P+6E



Layout

Rental prices: 5.600 €/ month + VAT

Maintenance: 3,8 €/ sqm/ month + VAT

FINISHES/EQUIPMENT

- ▶ **Others:** Video Surveillance , AC, Elevator, Heating System, Internet and Voice Connection , TV Cable, Parquet, Sandstone, Faience, Insulated Windows

DESCRIPTION

Office spaces situated in Primaverii area very close to Charles de Gaulle Square and Mircea Eliade Boulevard.

The location allows an easy access both to northern side of Bucharest, the Commercial Gallery Baneasa and to the city center and the all the important point of interest in the city.

Facilities:

- air conditioning
- security, reception
- modern amenities
- 2 parking places (100 Euro/ place + VAT)
- 2 terraces: 32 sqm + 46 sqm