

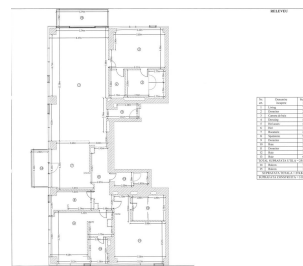
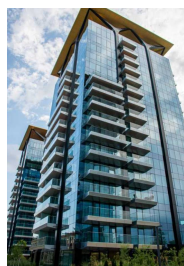
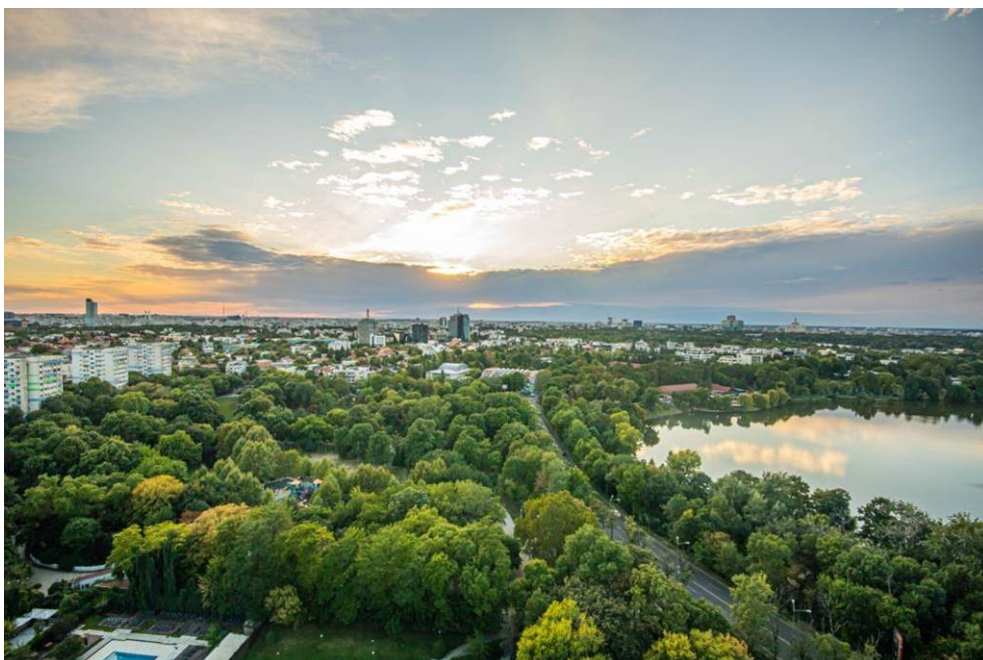
## Primaverii

## Apartment for Sale

4 rooms

### CARACTERISTICS

- ▶ **AREA:** Primaverii
- ▶ **Usable surface:** 274.84 sqm
- ▶ **Built surface:** 311.8 sqm
- ▶ **No. of Bedrooms:** 3
- ▶ **No. of Rooms:** 4
- ▶ **No. of Bathrooms:** 4
- ▶ **Construction year:** 2021
- ▶ **Balconies :** 2



### FINISHES/EQUIPMENT

- ▶ **Furniture:** Furnished, With Utilities
- ▶ **Others:** AC, Insulated Windows , Faience, Sandstone, Parquet, Garage, Storage rooms

### DESCRIPTION

That beautiful apartment is part of a great multifunctional real estate project which involves 3 elements – residential, office and commercial in Primaverii – Mircea Eliade.

This area has experienced the most important real estate development in the recent years, being known both for the commercial area and for some of the most attractive residential projects.

Neighborhoods: Verdi Park, Promenada Mall, Floreasca Park and Club, Mircea Eliade Boulevard with Primaverii Palace (former residence of Ceausescu family), Calea Floreasca and Barbu Vacarescu, medical centers, hypermarkets, schools and highschools as well as the business area so sought after by the multinationals present on the territory of Romania.

Description:

The apartment is divided in 4 rooms and is disposed on the 14th Floor benefiting of a beautiful view:

Large and bright living room (79 sqm) with exit to a terrace, kitchen and dining, also with exit to a terrace, wash room, master bedroom with bathroom and dressing, 2nd bedroom with own bathroom, laundry room, 3rd bedroom, hall, dressing, bathroom, parking places in the underground.

The apartment is rented.

Surfaces:

Usable area: 255.73 sqm

Built area: 311.80 sqm

Total area: 274.84 sqm

2,600,000 EUR + VAT

24.69 BITCOIN + VAT