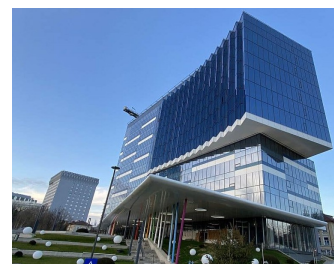
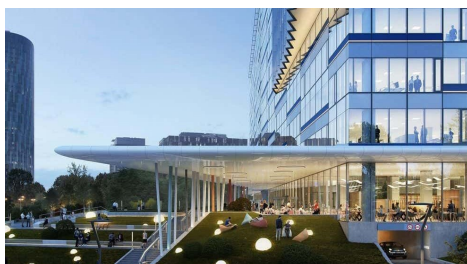
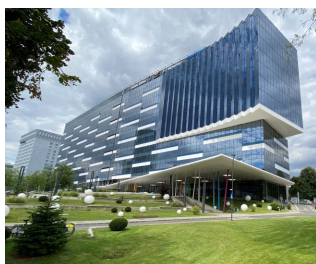


Barbu Vacarescu

CARACTERISTICS

- ▶ **AREA:** Barbu Vacarescu
- ▶ **Usable surface:** 39000 sqm
- ▶ **Maximum height:** 2S+P+11E



Layout

Maintenance: 4,25 Euro/ sqm/month +
VAT - open book

Available area: 360 sqm - 5,000 sqm

DESCRIPTION

Office building for rent situated in the center of the city in Barbu Vacarescu area, at only a few minutes distance from the subway station. The properties have many open spaces with natural light.

Facilities:

green building

HVAC

PC and phone network

Glass curtain wall with anti-solar protection

BMS

raised floor

CCTV

5 elevators

cafeteria, restaurant, arranged courtyard

Bicycle parking with all the facilities (showers, lockers)

16.50 EUR sqm + VAT

0.01 ETHEREUM sqm + VAT