

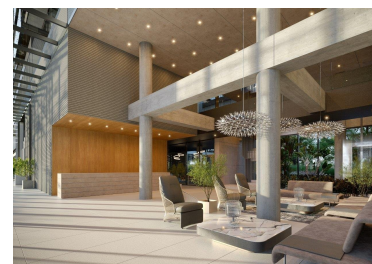
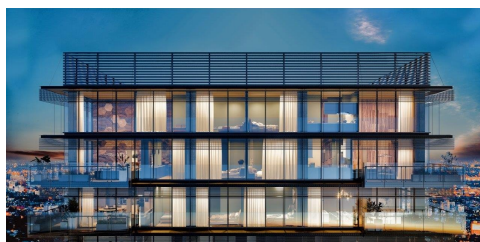
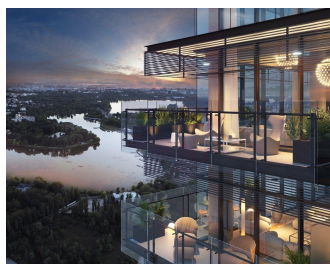
Floreasca

Apartment for Sale

4 rooms

CARACTERISTICS

- ▶ **AREA:** Floreasca
- ▶ **Usable surface:** 103 sqm
- ▶ **No. of Bedrooms:** 3
- ▶ **No. of Rooms:** 4
- ▶ **No. of Bathrooms:** 3
- ▶ **Parking places:** 2
- ▶ **Construction year:** 2022
- ▶ **Maximum height:** 2S+P+12E



DESCRIPTION

Located in the beating heart of the upmarket Floreasca district, the two luxury glass-fronted towers spanning 12 and 25 floors are built to cater to those with exquisite tastes.

Two buildings that inevitably catch your eye, rise tall and elegant on Calea Floreasca, one of the most longed-for areas of Bucharest. The apartments high ceilings will add to the feeling of ultimate freedom and endless possibilities. A place where you feel like you can almost touch the clouds. A home where the sunrise will have a new meaning.

Technical specifications:

- Smart home system offers control over appliances and the home environment, bringing convenience to life, as well as security and energy-saving.
- Full height glass façade from floor to ceiling, with living areas clear height of 2.70 meters
- Exterior "brise soleil" with Aluminum snaps
- Balconies with secure glass balustrade of 1.40m with stainless steel fittings
- Multi-layered natural wood parquet, 14mm thickness
- Premium porcelain rectified ceramic tiles by Cerim, Porecelanosa or similar
- Premium Porta Doors, Pinum, DOOR SYSTEM, or similar, with MDF frame
- Sanitary items from Duravit, Laufen, Grohe, Kludi or similar
- Energy efficient climatization systems including fresh air supply
- Apartments ventilation through air linear grilles located at the ceiling level, with individual control for treated fresh air supply – filtering, heating and cooling (including heat recovery)
- Floor heating system
- Smart Home application, allowing monitoring & remote control of the apartment's main systems

- Kone, Schindler or similar lifts - 1,000 kg / 13 people, 2.5 m/s

- 4 lakes visible from the top floors
- underground parking spaces
- exterior parking spaces for visitors
- 5 high-speed elevators (13 pax capacity)
- 24/7 Security & Video Surveillance

520,000 EUR + VAT

5.17 BITCOIN + VAT

196.55 ETHEREUM + VAT