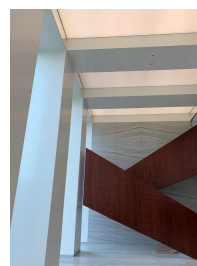
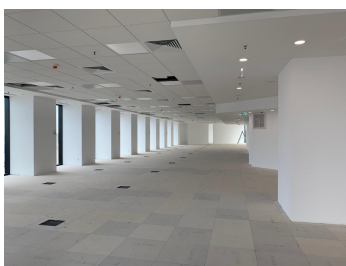


Presei Libere Square

CARACTERISTICS

- ▶ **AREA:** Presei Libere Square
- ▶ **Usable surface:** 2640 sqm
- ▶ **Floor:** Et. 12, Et. 13
- ▶ **Maximum height:** 3S+P+25E



Layout

The building provides an area of ~53.000 sqm of office spaces on 25 floors of approximately 1.357 sqm each.

Underground parking is displayed on three levels with 8.295 sqm gross area.

12th Floor: 1,320 sqm

13th Floor: 1,320 sqm

FINISHES/EQUIPMENT

► **Others:** Video Surveillance , Fire Protection, AC, Elevator, Insulated Windows , Faience, Sandstone, Garage

DESCRIPTION

The office building is located on one of the most important boulevards of the city, benefiting of an excellent accessibility and a very good connection to Bucharest's downtown and airports.

Strategically located in the Northern part of Bucharest, one of the city's main entrances, the office building, proudly sets new business opportunities in the most affluent side of the city, the area preferred by multinationals and prestigious local companies alike. Moreover, its 24 floors make it one of the highest towers in Bucharest.

The only available office spaces for rent in a tower in Bucharest.

The office building's exquisite location and high visibility makes it the perfect solution for triple A companies looking to relocate, expand or enter the market, while the high quality, functionality, comfort and efficient design add great value to the project.

In the Design Development, both the office tower and the adjacent car parking are fulfilling the LEED criteria for the «Platinum» certification.

The office building takes care of the work environment, providing 8 high-speed elevators of 17 people each, a fact that reduces the elevator waiting time to its minimum.

Fire protection by open sprinklers with interior hydrants.

All doors of the building are provided with closers.

High performance Schuco unitized façade.