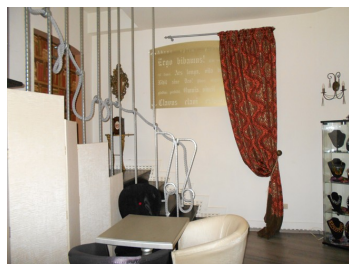


## Universitate

## Commercial Spaces

### CARACTERISTICS

- ▶ **AREA:** Universitate
- ▶ **Usable surface:** 126.58 sqm
- ▶ **Land Surface:** 400 sqm
- ▶ **Floor:** S + P



### DESCRIPTION

The space is located ultra-centrally in the street area behind the Intercontinental Hotel., in a building since 1945.  
The space is disposed on Ground floor + Basement.

#### Facilities:

- 2 streets opening;
- fitted-out;
- fitted-out basement for commercial purposes;
- perfect for boutique, coffee shop and/or restaurant.

#### Available area:

Total U.S. 126.58 sqm  
Ground floor: 76.26 sqm  
Basement: 50.32 sqm

**390,000 EUR**

**4.26 BITCOIN**

**190.83 ETHEREUM**