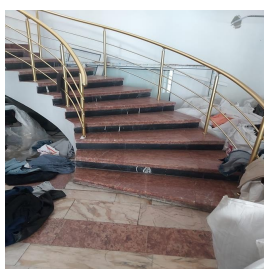


## Pantelimon

## Commercial Spaces for Rent

### CARACTERISTICS

- ▶ **AREA:** Pantelimon
- ▶ **Usable surface:** 600 sqm
- ▶ **No. of Bathrooms:** 2
- ▶ **Floor:** P+M



### DESCRIPTION

The space is located on Pantelimon Road, exceptional location, visibility, car and intense pedestrian traffic. The space is arranged on the Ground floor and mezzanine

Facilities:

- 2 access stairs
- 3 bathroom for the mezzanine and 1 bathroom on the ground floor
- own gas heating plant

Total usable area: 600 sqm

Ground floor usable area: 50 sqm

Mezzanine usable area: 550 sqm