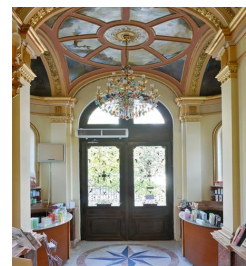
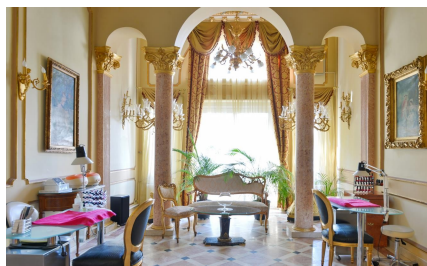


Romana Square

CARACTERISTICS

- ▶ **AREA:** Romana Square
- ▶ **Usable surface:** 1125 sqm
- ▶ **Land Surface:** 1000 sqm
- ▶ **Construction year:** 1865
- ▶ **Maximum height:** D+P+1E



Layout

Building: SB+GF+1F

Usable area: ~1,125 sqm

Semi-basement: 350 sqm

Ground floor: 430 sqm

1st Floor: 345 sqm

Land plot: 1,000 sqm

FINISHES/EQUIPMENT

- ▶ **Others:** AC, Heating System, Faience, Sandstone, Parquet

DESCRIPTION

Year of construction: 1865. Completely renovated and restored in 2009.

The scale cover represents a real model of restoration for the traditional roofs specific to this type of architecture.

Facilities:

- ventilation system
- surveillance system
- the building is decorated in the style of the VII century, frescoes and genuine decorations
- own heating plant
- yard

- parking spaces

22,000 EUR

0.30 BITCOIN

8.83 ETHEREUM