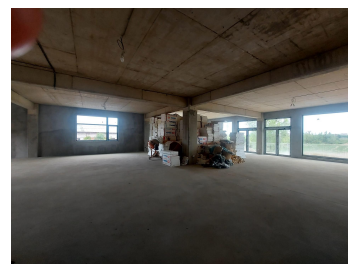
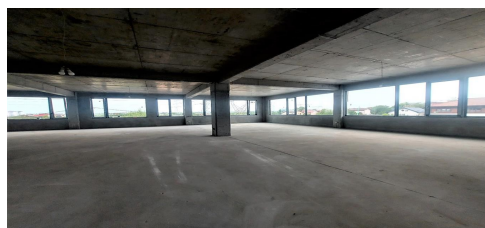


Theodor Pallady

Commercial Spaces for Rent

CARACTERISTICS

- ▶ **AREA:** Theodor Pallady
- ▶ **Usable surface:** 1557 sqm
- ▶ **Land Surface:** 2000 sqm
- ▶ **Parking places:** 30
- ▶ **Maximum height:** D+P+1E



Layout

Semi-basement: 248 sqm

Ground floor: 630 sqm

1st Floor: 645 sqm

Technical floor: technical space 38 sqm + terrace

Semi-basement: 1,000 Euro / month

Ground floor: 5,000 Euro/ month

1st Floor: 4,000 Euro/ month

The entire building: 10,000 Euro / month

FINISHES/EQUIPMENT

- ▶ **Others:** AC, Underfloor Heating, Insulated Windows , Heating System

DESCRIPTION

The building is located in the area of Theodor Pallady Boulevard, a 10-minute walk from the subway. It is near the Bucharest - Constanta highway.

Facilities:

The building will be completed by 15.08.2023

-Bathrooms;

-Electricity;

- Underfloor heating;

- own power plant;

(Approx 30 parking spaces)

10,000 EUR

0.18 BITCOIN

3.61 ETHEREUM